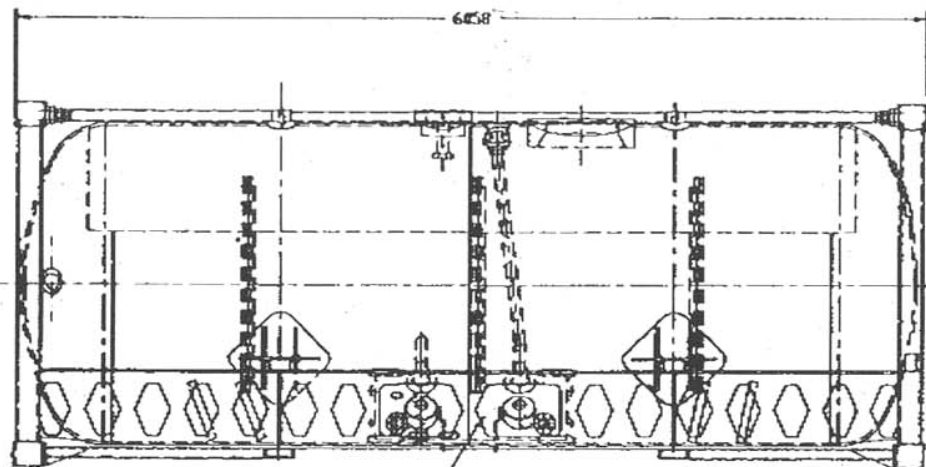


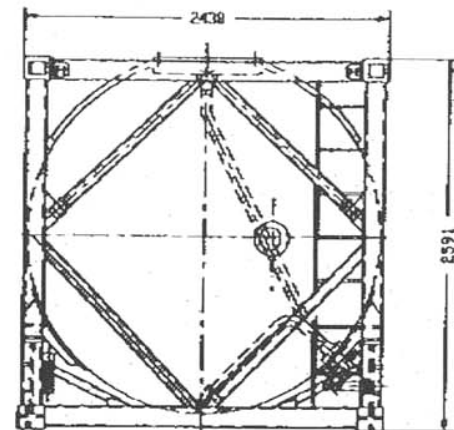
SAFETY RELIEF VALVE : FORT VALE 004/2 - - - S Δ
 WITH RUPTURE DISC : CONTINENTAL PER SC12053 Δ



SEE DETAIL '1'

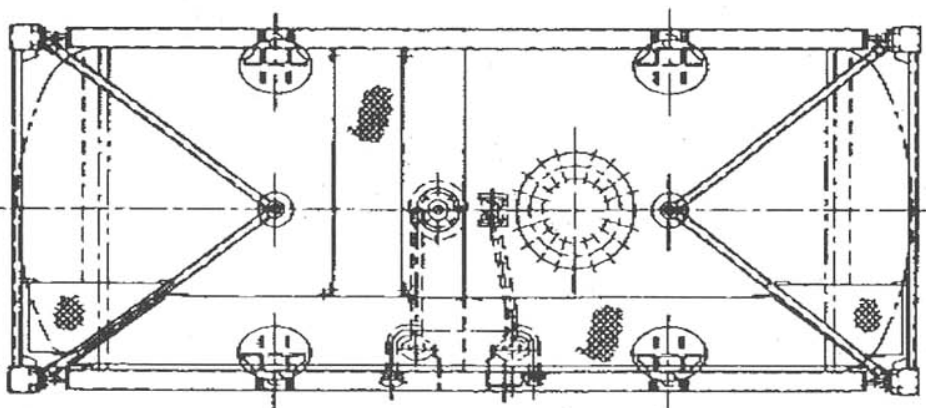
REF. DRAWING CON 24600/14

ELEVATION

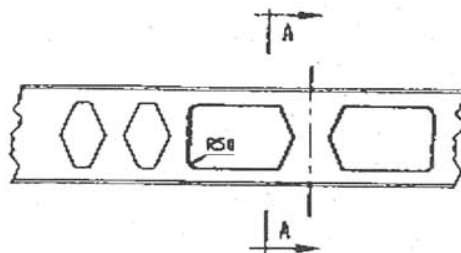


NOTES:

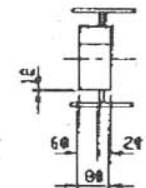
FOR DESIGN DATA AND GENERAL NOTES SEE DRAWING 22/CON 24600/1



PLAN VIEW



DETAIL '1'



SECTION A-A

REVISIONS

REV. 1 EMWG 17/7/96
 DESCRIPTION OF SAFETY VALVE AND RUPTURE DISC CHANGED
 17/7/96

<p>This drawing and/or specifications or the contents hereof are the property of BHP. No part of this drawing or specification or the contents hereof shall be used for any purpose other than the execution of the work specified hereon without the written consent of BHP. Any such use without the written consent of BHP, shall, without limitation, be held to be a breach of contract.</p>		<p>THIS DRAWING AND/OR SPECIFICATIONS OR THE CONTENTS HEREOF ARE THE PROPERTY OF BHP. NO PART OF THIS DRAWING OR SPECIFICATION OR THE CONTENTS HEREOF SHALL BE USED FOR ANY PURPOSE OTHER THAN THE EXECUTION OF THE WORK SPECIFIED HEREON WITHOUT THE WRITTEN CONSENT OF BHP. ANY SUCH USE WITHOUT THE WRITTEN CONSENT OF BHP, SHALL, WITHOUT LIMITATION, BE HELD TO BE A BREACH OF CONTRACT.</p>		<p>THIS DRAWING AND/OR SPECIFICATIONS OR THE CONTENTS HEREOF ARE THE PROPERTY OF BHP. NO PART OF THIS DRAWING OR SPECIFICATION OR THE CONTENTS HEREOF SHALL BE USED FOR ANY PURPOSE OTHER THAN THE EXECUTION OF THE WORK SPECIFIED HEREON WITHOUT THE WRITTEN CONSENT OF BHP. ANY SUCH USE WITHOUT THE WRITTEN CONSENT OF BHP, SHALL, WITHOUT LIMITATION, BE HELD TO BE A BREACH OF CONTRACT.</p>	
FABRICATION & MACHINING					
CONTAINER 246001 FOR IMD TYPE 5 CATANK S-246 GENERAL ARRANGEMENT					
DATE	BY	CHECKED	DATE	BY	CHECKED
25/10/94	EMWG	EMWG	25/10/94	EMWG	EMWG
<p>SCALE: 1:1</p>			<p>SCALE: 1:1</p>		
<p>PROJECT: 22/CON 24600/10</p>			<p>PROJECT: 22/CON 24600/10</p>		
<p>WORKSHOP: 10/7</p>			<p>WORKSHOP: 10/7</p>		

MACH. TOLERANCES UNLESS OTHERWISE SHOWN		
DIM.	TOL.	UNIT
Ø	± 0.1	mm
Ø	± 0.2	mm
Ø	± 0.3	mm
Ø	± 0.4	mm
Ø	± 0.5	mm
Ø	± 0.6	mm
Ø	± 0.7	mm
Ø	± 0.8	mm
Ø	± 0.9	mm
Ø	± 1.0	mm