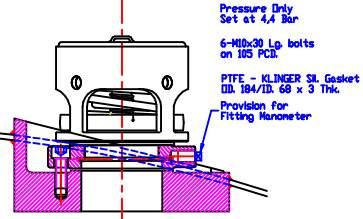
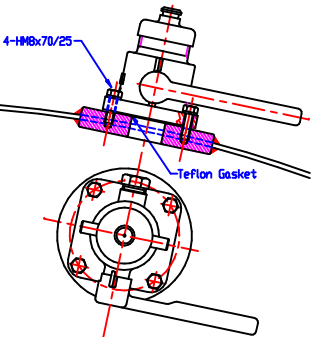


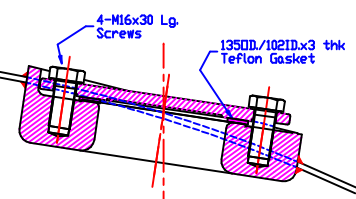
**(SRV) 2 1/2" BSP. Mega Super Ventix**  
PERILO Part No MK6SF44TSC



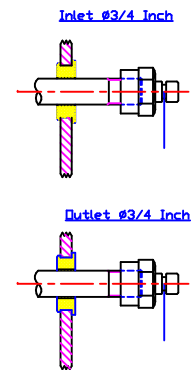
**(AI) SINGLE 1 1/2" BSP. AIR INLET**  
PERILO Part No AD4X6T2IP21



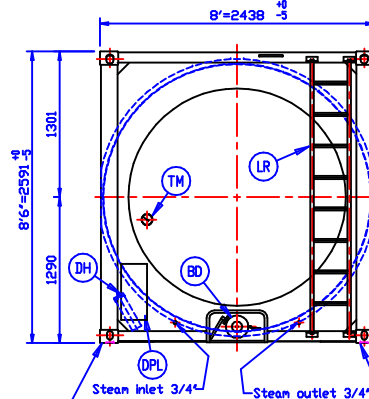
**(TDP) TOP DISCHARGE PROVISION**  
IN 80-3"



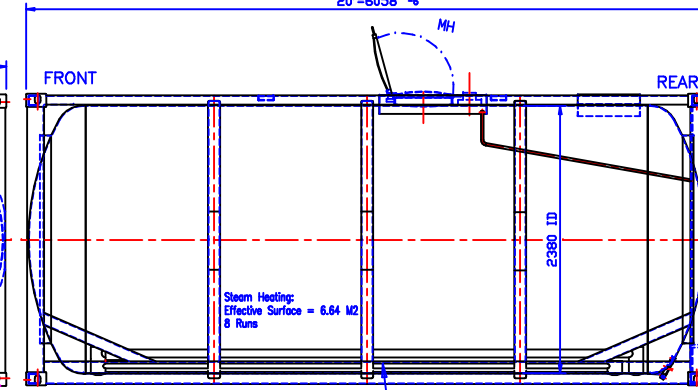
**(SH) STEAM HEATING IN AND OUT**



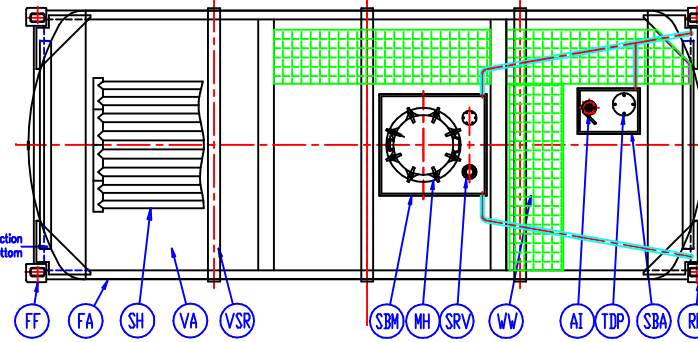
**REAR VIEW**



**FRONT**



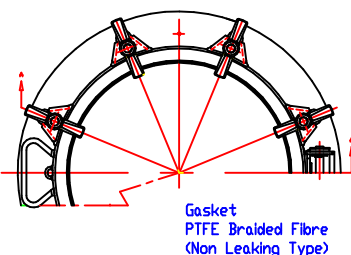
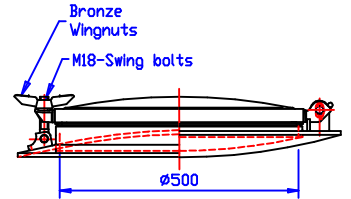
**REAR**



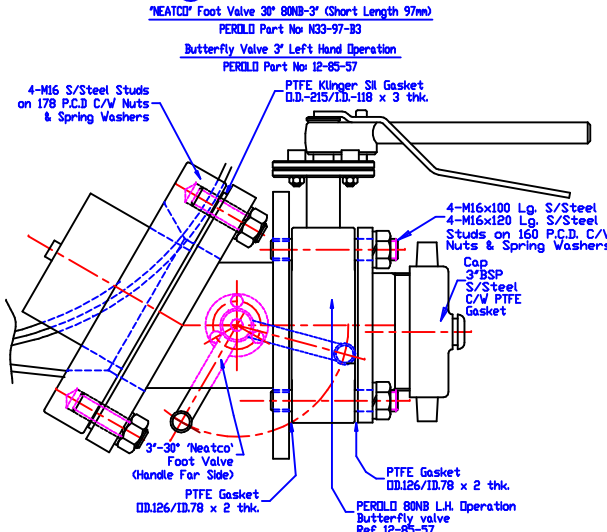
Shell	mm
MDMT	4.471
Min Constr.	4.6
Nom. Order Thk.	4.7

Dished Ends	mm
MDMT Knuckle	6.377
MDMT Crown	4.488
Nom. Order Thk.	7.0

**(MH) MAN-HOLE I.D. 500**  
SWIFT  
Opening to Front of Container  
Necking Radius 1209mm



**(BD) BOTTOM DISCHARGE**



Ref	Qty	Description	Material
GA	1	GENERAL ASSEMBLY	-
FA	1	FRAME ASSEMBLY	-
RF	1	REAR FRAME ASSEMBLY	S355J2H
FF	1	FRONT FRAME ASSEMBLY	S355J2H
LR	1	LADDER ASSEMBLY	S355J2H
WW	1	WALKWAY ASSEMBLY	AL 9042-0
DPL	1	DATAPLATE	316L
DI	1	DOCUMENT HOLDER	PVC
VSR	1	VESSEL ASSEMBLY	VA4MLC 4 682K
VSR	3	VACUUM STIFFENER RINGS	-
MH	1	MANHOLE	-
SRV	1	SAFETY RELIEF VALVE + PROVISION FOR SECOND	-
AI	1	AIR INLET VALVE	-
BD	1	BOTTOM DISCHARGE	-
TH	1	THERMOMETER ASSEMBLY	-
TDP	1	TOP DISCHARGE PROVISION	-
SH	1	STEAM HEATING	-
SBM	1	SPILLBOX FOR MANHOLE	-
SBA	1	SPILLBOX FOR ACCESSORIES	-

Finish	Parts List
Pickling and Passivation of Stainless Steel	Tank Internal : Yes Tank External : Welds Only Small Parts : Yes
Paint	Primer : Zinc Rich 30 µm Min Intermediate : Zinc Phosphate 40 µm Min Coat : CFC Free Chlorinated Rubber Top Coat : 50 µm Min Total DFT : 120 µm Min
Colour	RAL No. : TBA Description : Semi Gloss : Semi
Insulation	Mineral Wool : 30mm (min 60 kg/m <sup>3</sup> ) Polyurethane : 20mm (min 35 kg/m <sup>3</sup> )
Cladding	Aluminium Grade 3004 H32 or Eqv. 0.8mm Thk. (Pre-Painted)

Max gross weight	36000 Kg.
Tare weight	3930 Kg. ±3%
Capacity	25000 L -0 +1%
Liquid density	<1.2828
Products	Class: 3, 6.1, 8 & 9

DESIGN	Pressure	Max. Product Temperature
	4.0/-0.4 Bar	120°C
WORKING	Max Allowable Working Pressure	Temperature
	4.0/-0.4 Bar	-40°C/120°C
TEST	Hydrostatic pressure	Air Leakage
	6 Bar	1 Bar
	Steam Heating	10.5 Bar

Inspection	Bureau Veritas
Design Code	ASME VIII div.1
Joint Efficiency	0.85 to 1
Corrosion Allowance	0mm
Radiography	Shell : Spot (UWS1/UWS2) : Dished Ends : 100%
Heat Treatment	No
Stacking Load	86400 Kg./Corner Post
Welding Specifications	ASME IX
Consolidated Data Plate	Yes

Calibration	Every cm up to 85cm Calibration Below 85cm in 1000 L Increments
Supply of dipstick	No
APPROVALS:	TIR-RID/ADR-CSC-USDOT-IMDG (Via US DOT)-UIC-AAR600-TC

**INTENTIONAL TOLERANCES AS PER TRENCO**  
ALL SIZES ARE IN MILLIMETERS UNLESS OTHERWISE STATED  
This drawing is the sole property of Trench Containers  
It may not be divulged to or copied by any third party  
without the written consent of Trench Containers

REVISIONS	Q	07/02/2008	First Issue	BC	A.S.	P.S.
Revision	Date	DESCRIPTION	Drawn	Checked	Approved	

**TRENCO CONTAINERS** Quote

25000 L TYPE: 25FSTD  
GENERAL ASSEMBLY

CLIENT: Drawing: GA25FSTD Quote No: