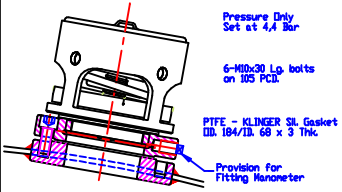
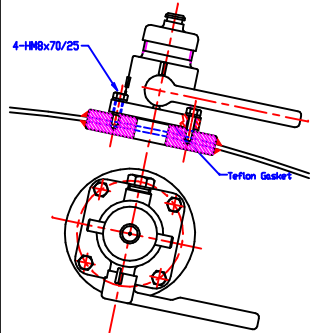


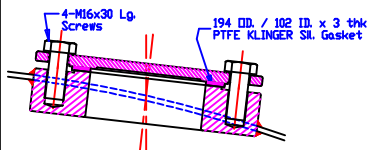
SRV 2 1/2" BSP. Mega Super Ventix
PERILO D No 65F44TSC



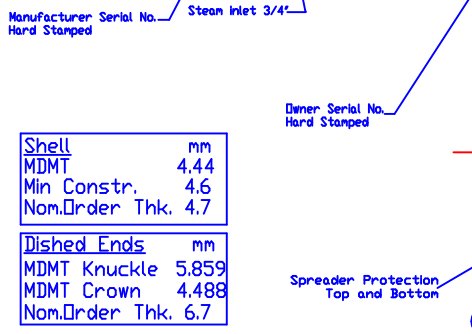
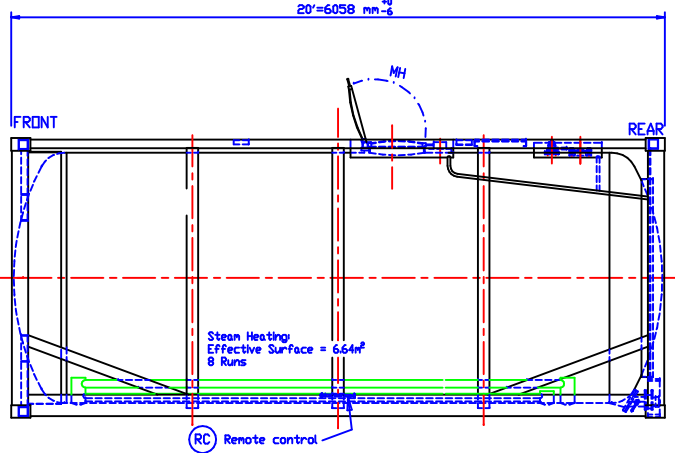
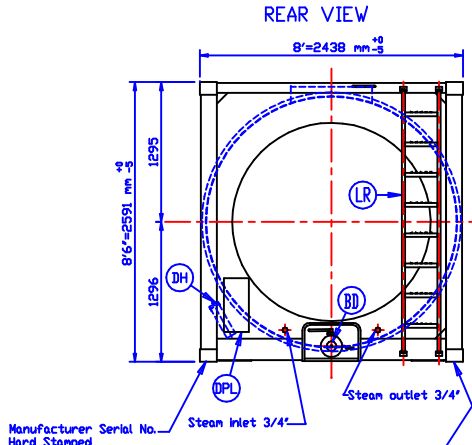
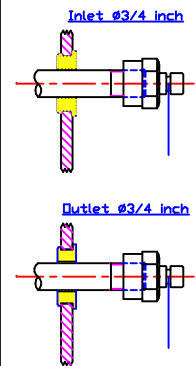
AI SINGLE 1 1/2" BSP. AIR INLET
PERILO Part No AD4X6T2P2I



TDP TOP DISCHARGE PROVISION
DN 80-3"

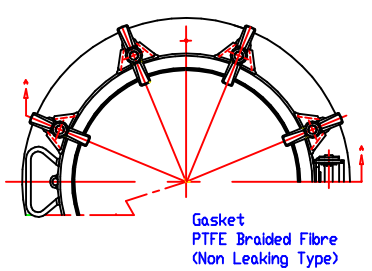
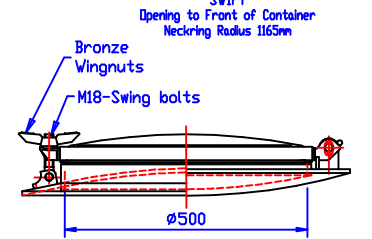


SH STEAM HEATING IN AND OUT

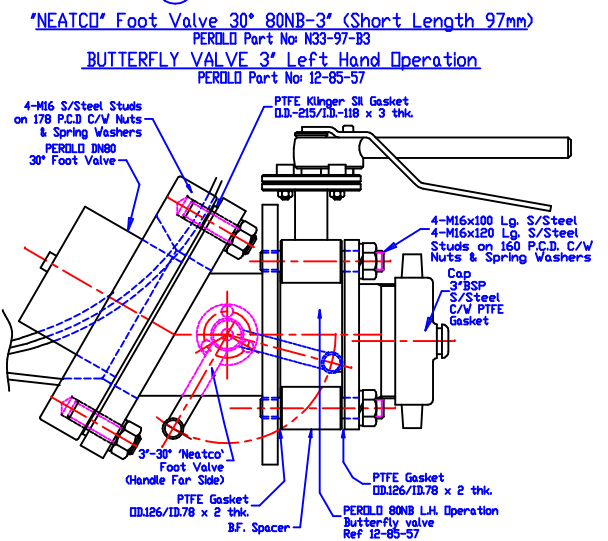


Shell	mm
MDMT	4.44
Min Constr.	4.6
Nom. Order Thk.	4.7
Dished Ends	mm
MDMT Knuckle	5.859
MDMT Crown	4.488
Nom. Order Thk.	6.7

MH MANHOLE I.D. 500



BD BOTTOM DISCHARGE



GA	1	GENERAL ASSEMBLY	-
FA	1	FRAME ASSEMBLY	-
RF	1	REAR FRAME ASSEMBLY	S355JH
FF	1	FRONT FRAME ASSEMBLY	S355JH
DPL	1	DATA PLATE	316L
LR	1	LADDER ASSEMBLY	S355JH
VN	1	VENT ASSEMBLY	V24MLC < 6000
VSR	3	VACUUM STIFFENER RINGS	-
MH	1	MANHOLE	-
SRV	1	SAFETY RELIEF VALVE + PROVISION FOR SECOND	-
AI	1	AIR INLET VALVE	-
BD	1	BOTTOM DISCHARGE	-
TH	1	THERMOMETER ASSEMBLY	-
TDP	1	TOP DISCHARGE PROVISION	-
SH	1	STEAM HEATING	-
SBM	1	SPILLBOX FOR MANHOLE	-
SBA	1	SPILLBOX FOR ACCESSORIES	-

Ref	Qty	Description	Material
Parts List			
Pickling and Passivation of Stainless Steel			
Tank Internal : Yes			
Tank External : Yes			
Small Parts : Yes			
Paint			
Primer : Zinc Rich 30 µm Min			
Intermediate : Zinc Phosphate 40 µm Min			
Coat			
Top Coat : CTC Free Chlorinated Rubber			
Total DFT : 120 µm Min			
Colour			
RAL No. Description : TBA			
Gloss : Semi			
Insulation			
Mineral Wool : 30mm (min 60 kg/m³)			
Polyurethane : 20mm (min 35 kg/m³)			
Cladding			
Aluminium Grade 3004 H32 or Eqv. 0.8mm Thk. (Pre-Painted)			

Max gross weight	36000 Kg.
Tare weight	3840 Kg. ±3%
Capacity	24000 L -0 +1%
Liquid density	<1.34
Products	Class: 3, 6.1, 8 & 9
DESIGN	Pressure : 4.0/-0.4 Bar
	Max. Product Temperature : 120°C
WORKING	Max Allowable Working Pressure : 4.0/-0.4 Bar
	Temperature : -40°C/120°C
	Steam Heating : 7 Bar
TEST	Hydrostatic pressure : 6 Bar
	Air Leakage : 1 Bar
	Steam Heating (Hydrostatic) : 10.5 Bar

Inspection	Bureau Veritas
Design Code	ASME VIII div.1
Joint Efficiency	0.85 to 1
Corrosion Allowance	0mm
Radiography (UWS1/UWS2)	Shell : Spot
	Dished Ends : 100%
Heat Treatment	No
Stacking Load	86400 Kg./Corner Post
Welding Specifications	ASME IX
Consolidated Data Plate	Yes
Calibration	Every cm up to 85cm Calibration Below 85cm in 1000 L Increments
Supply of dipstick	No
APPROVALS:	TIR-RID/ADR-CSC-USDOT-IMDG (Via US DOT)-UIC-AAR600-TC

INTENTIONAL TOLERANCES AS PER TRENOR
ALL SIZES ARE IN MILLIMETERS UNLESS OTHERWISE STATED
This drawing is the sole property of Trenchor Containers
It may not be altered or copied by any third party without the written consent of Trenchor Containers

REVISONS	C	D	E	F	G	H	I	J	K	L	M	N	O	P	Q	R	S	T	U	V	W	X	Y	Z
	01	02	03	04	05	06	07	08	09	10	11	12	13	14	15	16	17	18	19	20	21	22	23	24
Revision	Date	DESCRIPTION	Drawn	Checked	Approved																			

TRENOR CONTAINERS Quote

Tank 24000 Frame Std GENERAL ASSEMBLY

CLIENT: Drawing: GA24FSTD Quote No.