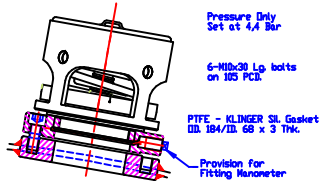
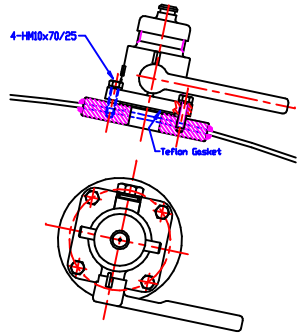


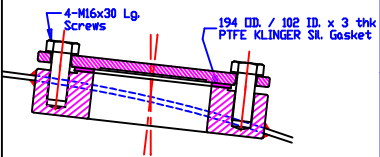
SRV 2 1/2" BSP. Mega Super Vent
PEROLD Part No: MW6SF44TSC



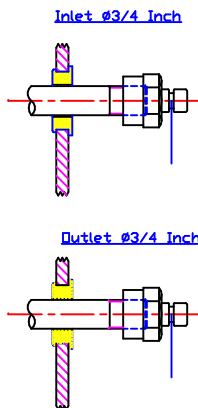
AI SINGLE 1 1/2" BSP. AIR INLET
PEROLD Part No: AM4X6T2IP21



TDP TOP DISCHARGE PROVISION
IN 80-3"

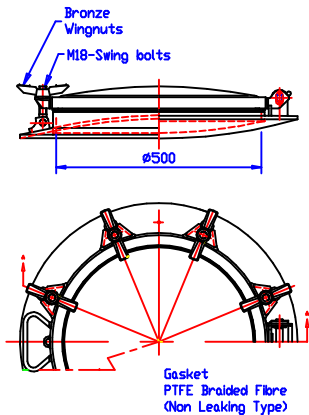


SH STEAM HEATING IN AND OUT

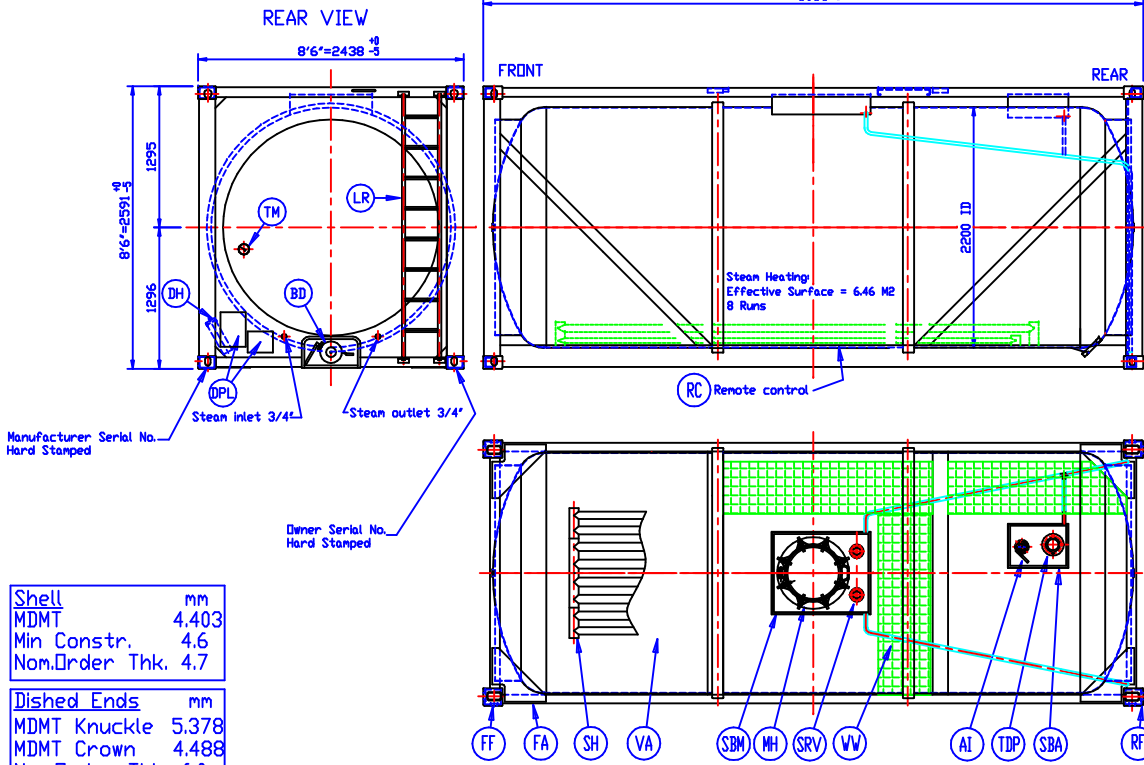
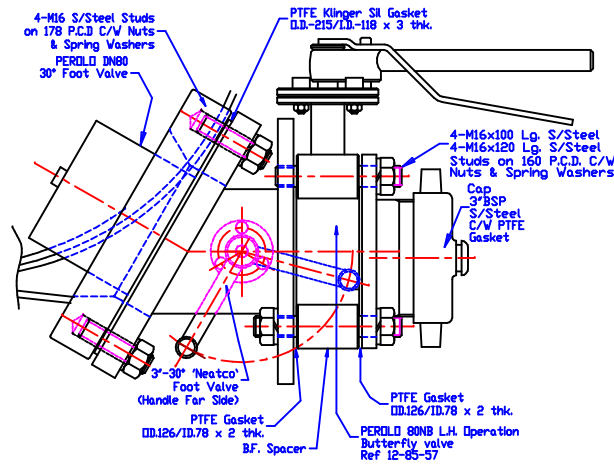


Shell	mm
MDMT	4.403
Min Constr.	4.6
Nom. Order Thk.	4.7
Dished Ends	
MDMT Knuckle	5.378
MDMT Crown	4.488
Nom. Order Thk.	6.0

MH MANHOLE I.D. 500
SWIFT
Opening to Front of Container
Necking Radius 1104mm



BD BOTTOM DISCHARGE
"NEATCO" Foot Valve 30" 80NB-3" (Short Length 97mm)
PEROLD Part No: N33-97-83
Butterfly Valve 3" Left Hand Operation
PEROLD Part No: 12-85-57



GA	1	GENERAL ASSEMBLY	-
FA	1	FRAME ASSEMBLY	-
RF	1	REAR FRAME ASSEMBLY	S355J2H
FF	1	FRONT FRAME ASSEMBLY	S355J2H
LR	1	LADDER ASSEMBLY	S355J2H
VW	1	WALKWAY ASSEMBLY	AL 5042-0
DPL	1	DATAPLATE	316L
DH	1	DOCUMENT HOLDER	PVC
VA	1	VESSEL ASSEMBLY	VAS4BL x 6822
VSR	2	VACUUM STIFFENER RINGS	-
MH	1	MANHOLE	-
SRV	1	SAFETY RELIEF VALVE + PROVISION FOR SECOND	-
AI	1	AIR INLET VALVE	-
BD	1	BOTTOM DISCHARGE	-
TH	1	THERMOMETER ASSEMBLY	-
TDP	1	TOP DISCHARGE PROVISION	-
SH	1	STEAM HEATING	-
SBM	1	SPILLBOX MANHOLE	-
SBA	1	SPILLBOX ACCESSORIES	-

Ref	Qty	Description	Material
Parts List			
Painting and Passivation of Stainless Steel		Tank Internal : Yes	
		Tank External : Yes	
		Small Parts : Yes	
Paint	Primer	Zinc Rich 30 µm Min	
	Intermediate Coat	Zinc Phosphate 40 µm Min	
	Top Coat	Chlorine Free Chlorinated Rubber 50 µm Min	
	Total DFT	120 µm Min	
Colour	RAL No.	TBA	
	Description	TBA	
Insulation	Glass	Semi	
	Mineral Wool	30mm (min 60 kg/m³)	
	Polyurethane	20mm (min 35 kg/m³)	
Cladding	Aluminium Grade 3004 H32 or Eqv. 0.8mm Thk. pre-painted		
	Max gross weight	36000 Kg.	
	Tare weight	3850 Kg. ±3%	
	Capacity	21000 L -0 +1%	
	Liquid density	<1.5309	
Products	Class: 3, 6.1, 8 & 9		
	Pressure	4.0/-0.4 Bar	
DESIGN	Max. Product Temperature	120°C	
	Max Allowable Working Pressure	4.0/-0.4 Bar	
WORKING	Temperature	-40°C/120°C	
	Steam Heating	7 Bar	
TEST	Hydrostatic pressure	6 Bar	
	Air Leakage	1 Bar	
	Steam Heating (Hydrostatic)	10.5 Bar	
Inspection	Bureau Veritas		
	Design Code	ASME VIII div.1	
	Joint Efficiency	0.85 to 1	
	Corrosion Allowance	0mm	
Radiography (UWS1/UWS2)	Shell	Spot	
	Dished Ends	100%	
	Heat Treatment	No	
	Stacking Load	86400 Kg./Corner Post	
	Welding Specifications	ASME IX	
	Consolidated Data Plate	Yes	
Calibration	Every cm up to 85cm		
	Calibration Below 85cm in 1000 L Increments		
	Supply of dipstick	No	
APPROVALS: TIR-RID/ADR-CSC-USDOT-IMDG (Via US DOT)-UIC-AAR600-TC			

INTENTIONAL TOLERANCES AS PER TRENCO
ALL SIZES ARE IN MILLIMETERS UNLESS OTHERWISE STATED
This drawing is the sole property of Trench Containers
It may not be altered or copied by any third party
without the written consent of Trench Containers

Q	NO	DATE	DESCRIPTION	BY	CHKD	APPRD

TRENCO CONTAINERS Quote

21000 L TYPE: 21FSTD
GENERAL ASSEMBLY

CLIENT: Drawing: GA21FSTD Quote No: