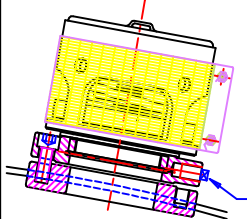
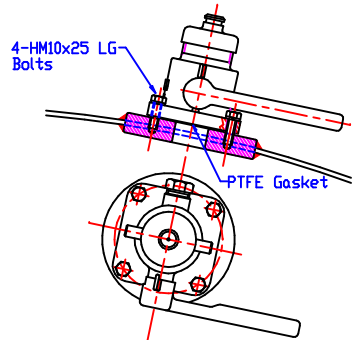


SRV 24" BSP. Mega Super Ventx
PERILD Part No. N65P44TGC

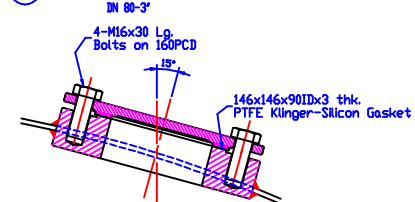


Pressure Only Set at 4,4 Bar
6-M10x20 Lg. Cap Screws on 105 PCD.
PTFE Solid Gasket
OD: 90/ID: 66 x 2 Thk.
Provision For Fitting Manometer

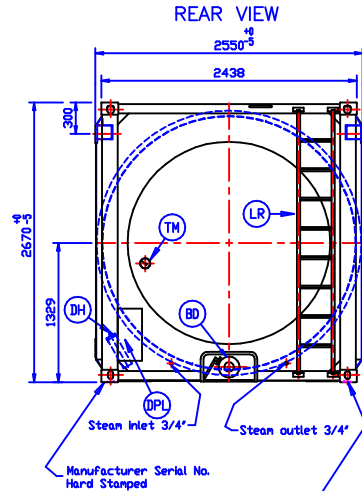
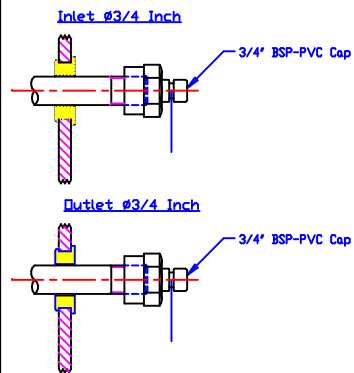
AI SINGLE 1 1/2" BSP. AIR INLET
Supplier: GESTRA



TDP TOP DISCHARGE PROVISION
IN 80-3"



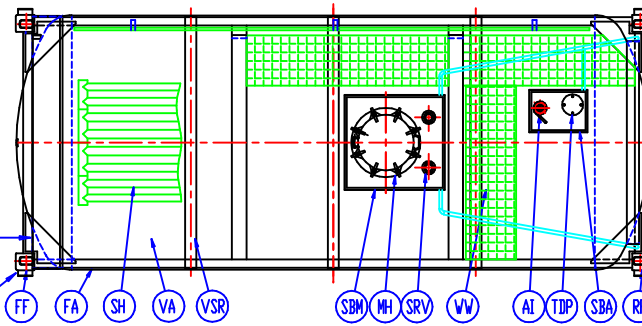
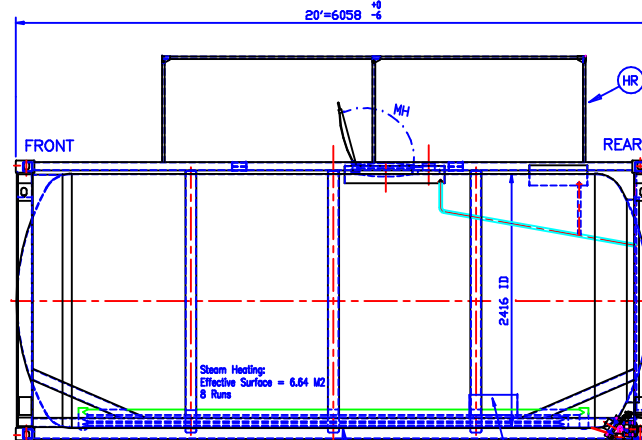
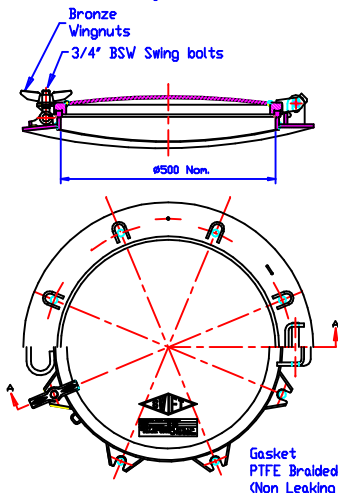
SH STEAM HEATING IN AND OUT



Shell mm 4,403
MDMT 4,403
Nom. Order Thk. 4,5

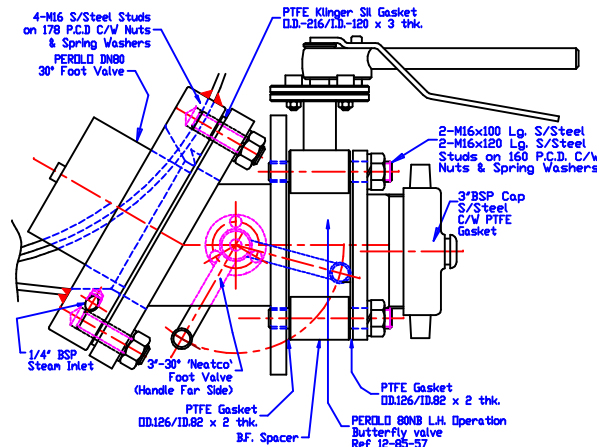
Dished Ends mm
MDMT Knuckle 5,151
MDMT Crown 4,403

MH MANHOLE I.D. 500 NOM. SWIFT
Opening to Front of Container Necking Radius 1182mm



BD BOTTOM DISCHARGE

"NEATCO" Foot Valve 30" 80NB-3" (Short Length 97mm)
PERILD Part No. N33-97-93
Butterfly Valve 3" Left Hand Operation
PERILD Part No. 12-85-57



Ref	Qty	Description	Material
GA	1	GENERAL ASSEMBLY	-
FA	1	FRAME ASSEMBLY	-
RF	1	REAR FRAME ASSEMBLY	S395L2H
FF	1	FRONT FRAME ASSEMBLY	S395L2H
LR	1	LADDER ASSEMBLY	S395L2H
DPL	1	DATAPLATE	316L
DH	1	DOCUMENT HOLDER	PVC
VW	1	VALVEWAY ASSEMBLY	AL 5042-0
VA	1	VESSEL ASSEMBLY	VL440-DC 003X
VSR	3	VACUUM STIFFENER RINGS	-
MH	1	MANHOLE	-
SRV	1	SAFETY RELIEF VALVE + PROVISION FOR SECOND	-
AI	1	AIR INLET VALVE	-
BD	1	BOTTOM DISCHARGE	-
TH	1	THERMOMETER ASSEMBLY	-
TDP	1	TOP DISCHARGE PROVISION	-
SH	1	STEAM HEATING	-
SBA	1	SPILLBOX FOR MANHOLE	-
SBA	1	SPILLBOX FOR ACCESSORIES	-
HR	1	FOLDABLE HANDRAL	-
UIC	1	UIC BOARD BRACKET	-

Part	Material
Pickling and Passivation of Stainless Steel	Tank Internal : Yes Tank External : Yes Small Parts : Yes
Point	Primer : Zinc Rich 30 µm Min Intermediate Coat : Zinc Phosphate 40 µm Min Top Coat : CTC Free Chlorinated Rubber 50 µm Min
Colour	BS No. : BS 381, C166 Description : French Mason' Blue Gloss : Semi
Insulation	Mineral Wool : 30mm (min 60 kg/m³) Polyurethane : 20mm (min 35 kg/m³)
Cladding	Aluminium Grade 5251 H44 or Eqv. 0.8mm Thk. (Pre-Painted)

Max gross weight	36000 Kg.
Tare weight	3910 Kg. ±3%
Capacity	26000 L -0 +1%
Liquid density	<1.23423
Products	Class: 3, 6.1, 8 & 9
DESIGN	Pressure 4.0/-0.4 Bar Max. Product Temperature 120°C
WORKING	Max Allowable Working Pressure 4.0/-0.4 Bar Temperature -40°C/120°C Steam Heating 7 Bar
TEST	Hydrostatic pressure 6 Bar Air Leakage 1 Bar Steam Heating 10.5 Bar

Inspection	Bureau Veritas
Design Code	ASME VIII div.1
Joint Efficiency	0.85 to 1
Corrosion Allowance	0mm
Radiography (UWS1/UWS2)	Shell Spot Dished Ends 100%
Heat Treatment	No
Stacking Load (Per Post)	81000 Kg./ 6 HIGH
Welding Specifications	ASME IX
Consolidated Data Plate	Yes
Calibration	Every cm up to 85cm Calibration Below 85cm in 1000 L increments
Supply of dipstick	No
APPROVALS:	TIR-RID/ADR-CSC-IMG-UIC (IC70)

IDENTICAL TOLERANCES AS PER TRENCO
ALL SIZES ARE IN MILLIMETERS UNLESS OTHERWISE STATED
This drawing is the sole property of Trench Containers
It may not be divulged to or copied by any third party
without the written consent of Trench Containers

REVISONS	Q	ISSUE	First Issue	DESCRIPTION	BC	A.S.	M.E.
Revision	Date	Drawn	Checked	Approved			

TRENCO CONTAINERS Contract

Tank 26000 Frame Tank
2550 x 2670
GENERAL ASSEMBLY

CLIENT: DCI Drawing: GA26FITL-006 Contract No: m-006