

CLIENT: OCI/TANKSPAN

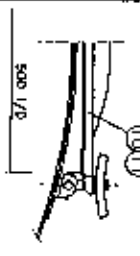
MANUF: CONSANI ENG.

W.O. 2641

P14709 TO P14728

TASU 214021 TO 214040

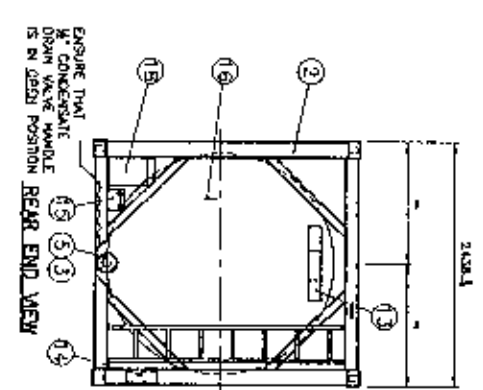
PORT FOR MANWAY CASSET TO BE POSITIONED DIRECTLY BELOW ONE SHANGHAI CASSET. GENUINE PTFE BRAIDED



PORT WELD MANUFD No. 216/70000
PORT WELD REWORKED No. 879/83994
MANWAY ASSEMBLY (6)



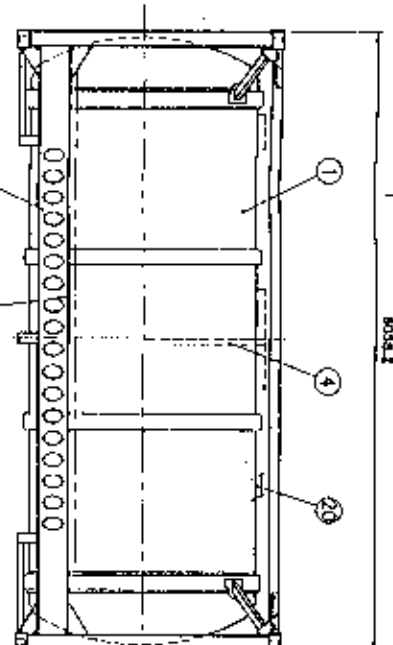
IDENTIFIED BY SERIAL NO. (16)



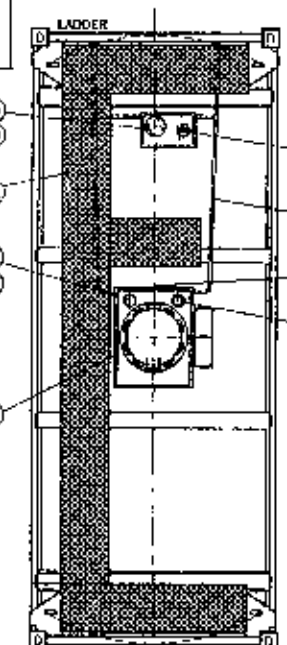
ENSURE THAT ALL CONGREGATE DRAIN VALVE HANDLE IS IN OPEN POSITION

2534.1

8034.1

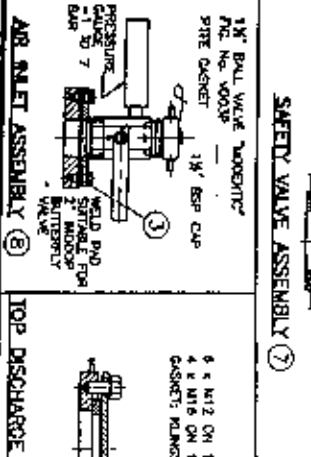


SIDE VIEW

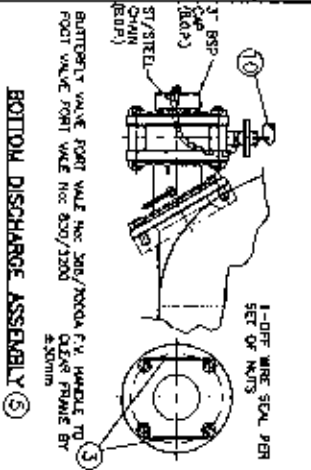


PLAN VIEW

NOTE 1



SAFETY VALVE ASSEMBLY (7)

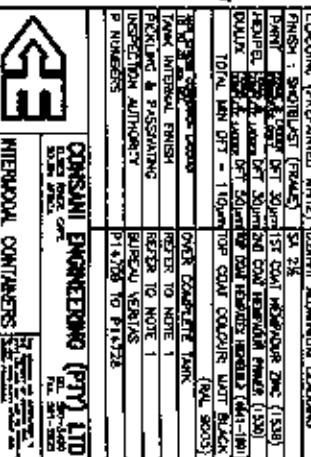


SAFETY RELIEF BLANKING ASSEMBLY (21)

TOP DISCHARGE ASSEMBLY (9)

5 x 4 1/2 ON 150 PDD
4 x 4 1/2 ON 150 PDD
CASSETS: PLAIN/STEEL/PTFE

3\"/>



BOTTOM DISCHARGE ASSEMBLY (5)

1 1/2\"/>

AIR INLET ASSEMBLY (8)

SECTION	NO.	DESCRIPTION	QTY	REVISION
SECTION 1	1	WELD END STAINLESS FOR BUTTERFLY VALVE	1	
	2	WELD END STAINLESS FOR BUTTERFLY VALVE	1	
	3	WELD END STAINLESS FOR BUTTERFLY VALVE	1	
	4	WELD END STAINLESS FOR BUTTERFLY VALVE	1	
	5	WELD END STAINLESS FOR BUTTERFLY VALVE	1	
	6	WELD END STAINLESS FOR BUTTERFLY VALVE	1	
	7	WELD END STAINLESS FOR BUTTERFLY VALVE	1	
	8	WELD END STAINLESS FOR BUTTERFLY VALVE	1	
	9	WELD END STAINLESS FOR BUTTERFLY VALVE	1	
	10	WELD END STAINLESS FOR BUTTERFLY VALVE	1	
SECTION 2	1	WELD END STAINLESS FOR BUTTERFLY VALVE	1	
	2	WELD END STAINLESS FOR BUTTERFLY VALVE	1	
	3	WELD END STAINLESS FOR BUTTERFLY VALVE	1	
	4	WELD END STAINLESS FOR BUTTERFLY VALVE	1	
	5	WELD END STAINLESS FOR BUTTERFLY VALVE	1	
	6	WELD END STAINLESS FOR BUTTERFLY VALVE	1	
	7	WELD END STAINLESS FOR BUTTERFLY VALVE	1	
	8	WELD END STAINLESS FOR BUTTERFLY VALVE	1	
	9	WELD END STAINLESS FOR BUTTERFLY VALVE	1	
	10	WELD END STAINLESS FOR BUTTERFLY VALVE	1	

GENERAL DIMENSIONS

NO.	DESCRIPTION	UNIT	VALUE
1	HEIGHT	m	12.19
2	WIDTH	m	2.44
3	DEPTH	m	2.44
4	WEIGHT	kg	1000
5

MATERIAL SPECIFICATION

ITEM NO.	DESCRIPTION	QTY	UNIT	REMARKS
1
2

PARTS LIST

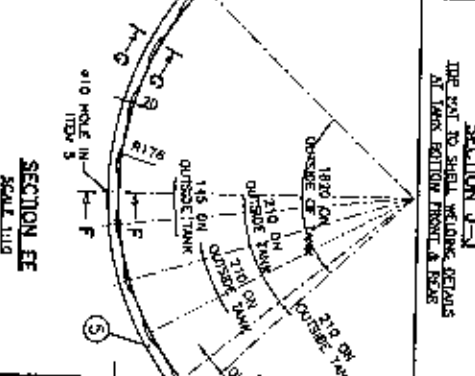
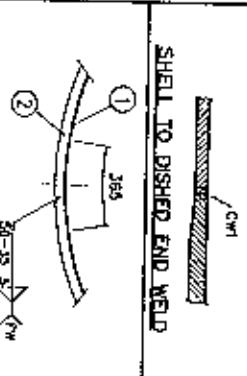
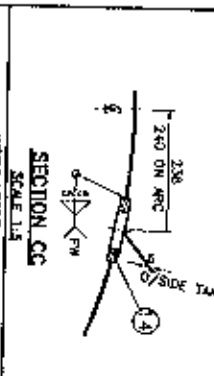
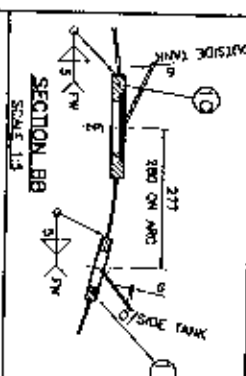
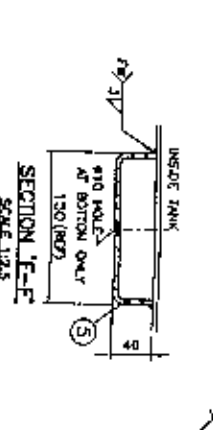
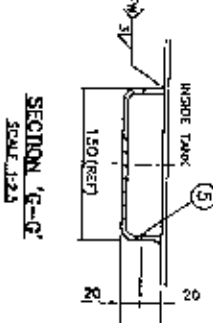
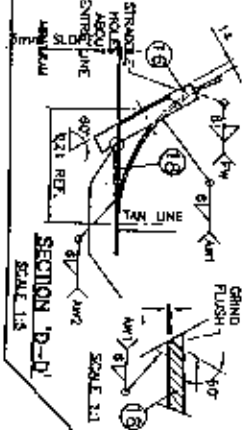
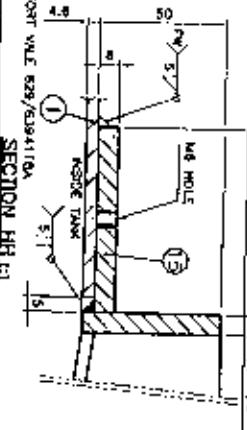
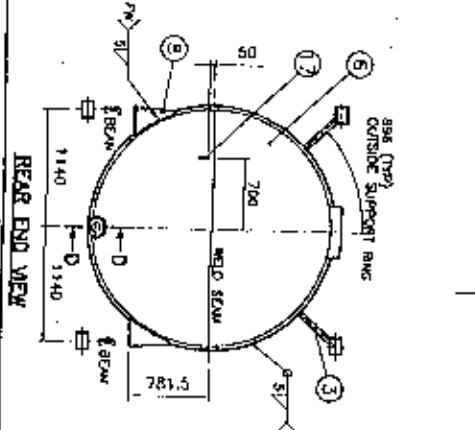
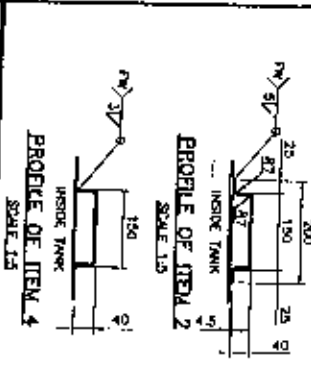
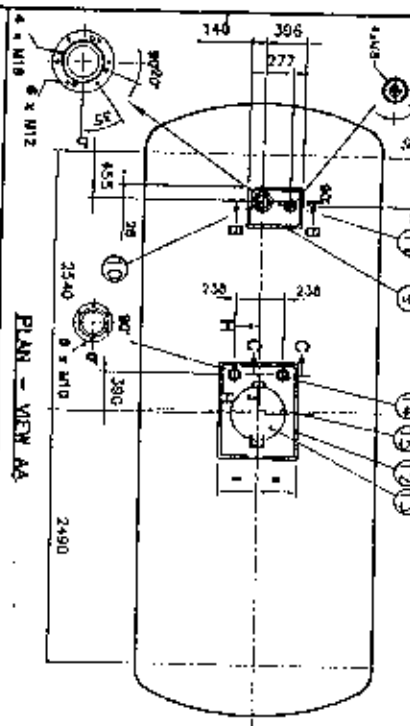
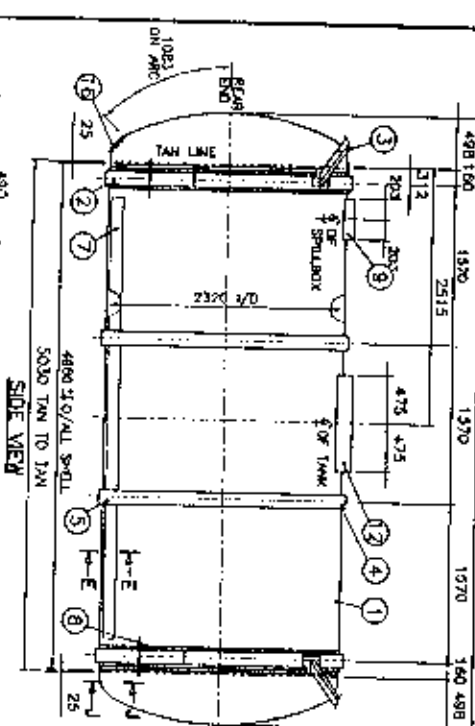
NO.	QTY	UNIT	DESCRIPTION	REMARKS
1	1		TANK DETAILS	241-11-110
2	1		FRAME	241-11-110
3	10	Y	WIRE SEAL	241-11-110
4	1		CAL. OPERATOR	241-11-110
5	1		BOTTOM DISCHARGE ASSEMBLY	241-11-110
6	1		MANWAY IN PORT	241-11-110
7	1		SAFETY VALVE	241-11-110
8	1		AIR INLET ASSEMBLY	241-11-110
9	1		TOP DISCHARGE ASSEMBLY	241-11-110
10	1		1 1/2\"/>	
11	1	
12	1	
13	1	
14	1	
15	1	
16	1	
17	1	
18	1	
19	1	
20	1	
21	1	

TECHNICAL DATA

ITEM	DESCRIPTION	VALUE
1	DESIGN PRESSURE	...
2	TEST PRESSURE	...
3	MAXIMUM ALLOWABLE WORKING PRESSURE	...
4	DESIGN TEMPERATURE	...
5
6
7
8
9
10
11
12
13
14
15
16
17
18
19
20
21

CONSUMI ENGINEERING (PTY) LTD
GENERAL ARRANGEMENT
20 x 24 000 LITRE FRAME TANK CONTAINER
W.O. 2641

60255 D/ALL TANK



MATERIAL SPECIFICATION

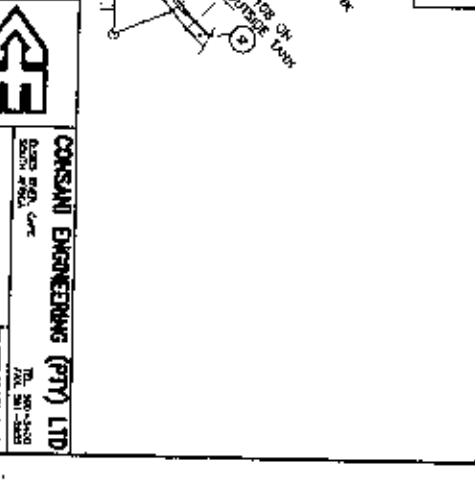
ITEM NO.	DESCRIPTION	QUANTITIES	REFERENCE
1	SHIELD METAL ARC WELDING ELECTRODE		
2	SHIELD METAL ARC WELDING ELECTRODE		
3	SHIELD METAL ARC WELDING ELECTRODE		
4	SHIELD METAL ARC WELDING ELECTRODE		
5	SHIELD METAL ARC WELDING ELECTRODE		
6	SHIELD METAL ARC WELDING ELECTRODE		
7	SHIELD METAL ARC WELDING ELECTRODE		
8	SHIELD METAL ARC WELDING ELECTRODE		
9	SHIELD METAL ARC WELDING ELECTRODE		
10	SHIELD METAL ARC WELDING ELECTRODE		
11	SHIELD METAL ARC WELDING ELECTRODE		
12	SHIELD METAL ARC WELDING ELECTRODE		
13	SHIELD METAL ARC WELDING ELECTRODE		
14	SHIELD METAL ARC WELDING ELECTRODE		
15	SHIELD METAL ARC WELDING ELECTRODE		
16	SHIELD METAL ARC WELDING ELECTRODE		
17	SHIELD METAL ARC WELDING ELECTRODE		
18	SHIELD METAL ARC WELDING ELECTRODE		
19	SHIELD METAL ARC WELDING ELECTRODE		
20	SHIELD METAL ARC WELDING ELECTRODE		

PARTS LIST

NO.	QTY	DESCRIPTION	QUANTITIES	REFERENCE
1	1	SHIELD METAL ARC WELDING ELECTRODE		
2	1	SHIELD METAL ARC WELDING ELECTRODE		
3	1	SHIELD METAL ARC WELDING ELECTRODE		
4	1	SHIELD METAL ARC WELDING ELECTRODE		
5	1	SHIELD METAL ARC WELDING ELECTRODE		
6	1	SHIELD METAL ARC WELDING ELECTRODE		
7	1	SHIELD METAL ARC WELDING ELECTRODE		
8	1	SHIELD METAL ARC WELDING ELECTRODE		
9	1	SHIELD METAL ARC WELDING ELECTRODE		
10	1	SHIELD METAL ARC WELDING ELECTRODE		
11	1	SHIELD METAL ARC WELDING ELECTRODE		
12	1	SHIELD METAL ARC WELDING ELECTRODE		
13	1	SHIELD METAL ARC WELDING ELECTRODE		
14	1	SHIELD METAL ARC WELDING ELECTRODE		
15	1	SHIELD METAL ARC WELDING ELECTRODE		
16	1	SHIELD METAL ARC WELDING ELECTRODE		
17	1	SHIELD METAL ARC WELDING ELECTRODE		
18	1	SHIELD METAL ARC WELDING ELECTRODE		
19	1	SHIELD METAL ARC WELDING ELECTRODE		
20	1	SHIELD METAL ARC WELDING ELECTRODE		

NOTE:
ALL SHELL & DISK END WELD PAID WELD PROFILES TO BE REVISED ON INSIDE OF TANK ONLY.

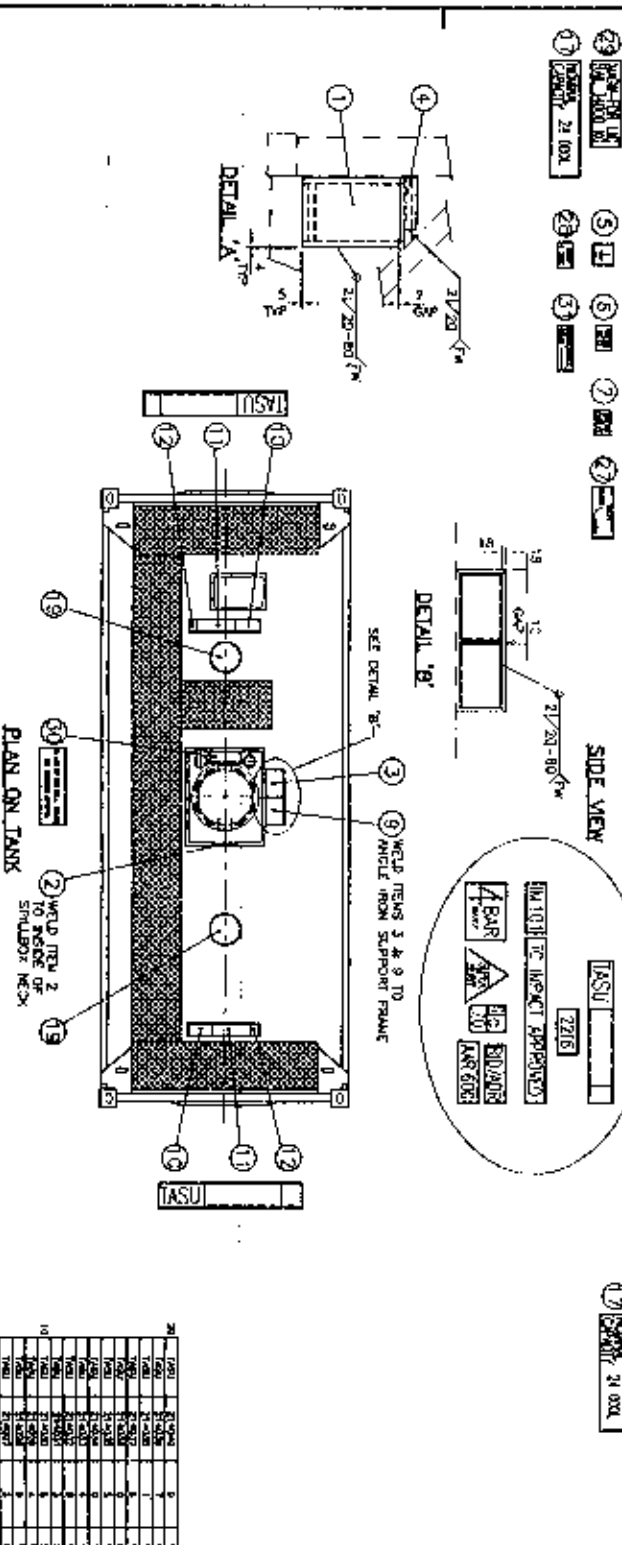
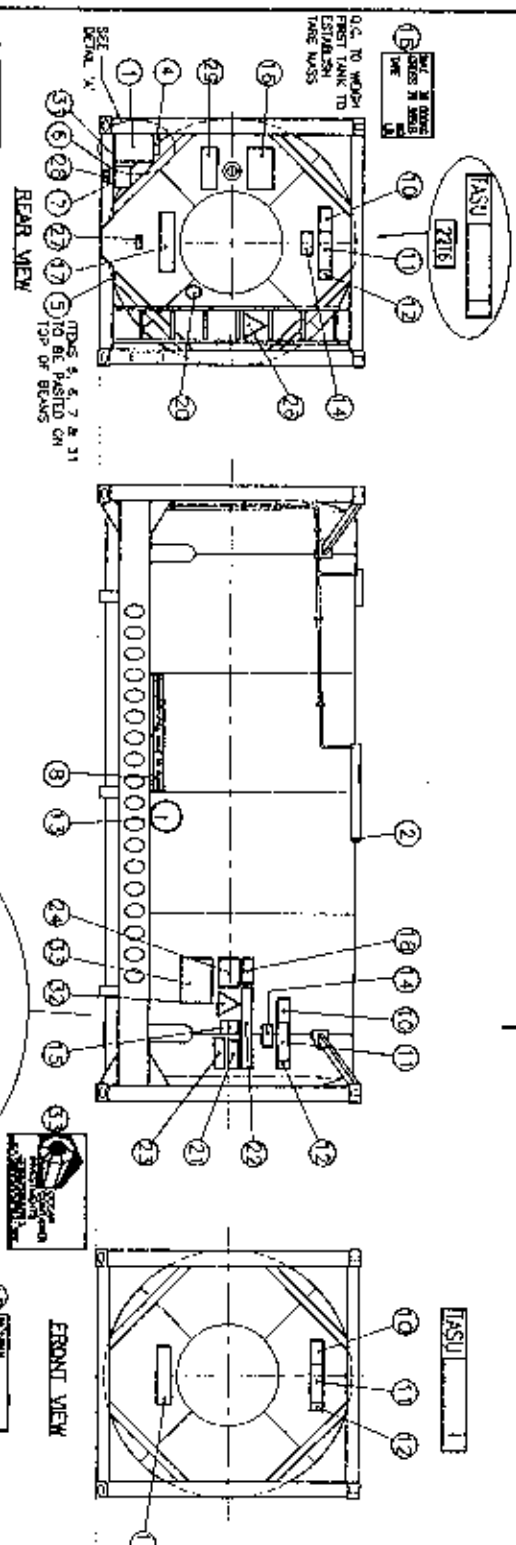
NOTE:
QUANTITIES SHOWN ARE FOR 1-OFF T.O. 20 OFF T.O. IN CONTRACT.



REVISION NO.	DESCRIPTION	DATE	BY	CHECKED
1	ISSUED FOR FABRICATION	25/4/77		
2	REVISION			
3	REVISION			
4	REVISION			
5	REVISION			
6	REVISION			
7	REVISION			
8	REVISION			
9	REVISION			
10	REVISION			
11	REVISION			
12	REVISION			
13	REVISION			
14	REVISION			
15	REVISION			
16	REVISION			
17	REVISION			
18	REVISION			
19	REVISION			
20	REVISION			

CONSANI ENGINEERING (PTY) LTD
24 000 LITRE FRAME TANK
TANK DETAILS

CLIENT: S.A. 2544
DRAWN BY: [Name]
CHECKED BY: [Name]
DATE: 25/4/77



LIMITED TO IMPACT APPROVALS
 4 BAR
 300 BAR
 100 BAR
 100 BAR

No	QTY	Part No	Description	Reference
1	1	2118	GENERAL DATA PLATE	261-41-024
2	1	2119	MANUFACTURER PLATE	SOLD 105
3	1	2120	CALIBRATION PLATE	261-41-024
4	1	2121	DANGER PLATE	261-41-024
5	1	2122	Earth DECAL	
6	1	2123	WV DECAL FOR STEEL TUBE WAGI	
7	1	2124	WOT DECAL FOR STEEL TUBE DEWIT	
8	1	2125	WEIGHT CONTROL DECAL	
9	1	2126	CALIBRATION PLATE	261-41-027
10	6	2127	OWNER CODE	
11	6	2128	SERIAL NUMBER	
12	6	2129	ISO AUTO CONTROL NUMBER	
13	6	2130	NO FORKLIFT DECAL	
14	6	2131	DIMENSION & TYPE	
15	6	2132	LET APPROVAL DECAL	
16	1	2133	WEIGHT PANEL	
17	2	2134	MINIMAL CAPACITY	
18	2	2135	WOT DECAL	
19	2	2136	NO WALKING DECAL	
20	1	2137	RESSECTION APPROVAL - BUREAU CENTRAL	
21	2	2138	PROZAK APPROVAL DECAL	
22	2	2139	TE IMPACT APPROVAL DECAL	
23	2	2140	448 600 APPROVED DECAL	
24	2	2141	WARNING PRESSURE DECAL	
25	1	2142	OVERHEAD POWER LINE WARNING DECAL	
26	1	2143	STEEL DESIGNER WAGI WERN DUEZ DECA	
27	1	2144	WAGI 4 BAR DECAL	
28	1	2145	WAGI TOP LAC DECAL	
29	1	2146	SECOND SAFETY ROLLER WAVE DECAL	
30	1	2147	121268 COMPRESSIVE DRAIN DECAL	
31	2	2148	121700 SUPER HEAVY DECAL	
32	2	2149	QIL OWNER CODE DECAL	
33				
34				
35				

• CLIENT TO PLEASE ADVISE DETAILS
 AND LOCATION OF OWNER LOGO DECALS.

NOTE:
 QUANTITIES SHOWN ARE FOR 1-OFF T.C.
 20 OFF T.C. IN CONTRACT.

CONSANT ENGINEERING (PTY) LTD
 2000 RIVERVIEW AVE
 SANDHURST, 2006
 TEL: 091-2460
 FAX: 091-2460
 WWW: WWW.CONSANT.CO.ZA

CLIENT	QTY	UNIT	PRICE	TOTAL
W.C.	2641			

REVISION	DATE	DESCRIPTION	BY	CHKD
1				
2				
3				
4				
5				
6				
7				
8				
9				
10				
11				
12				
13				
14				
15				
16				
17				
18				
19				
20				
21				
22				
23				
24				
25				
26				
27				
28				
29				
30				
31				
32				
33				
34				
35				

SECTION	DESCRIPTION	UNIT	QUANTITY	REMARKS
SECTION 1	STEEL SHEET PILING	SQ. METRE	100	
SECTION 2	STEEL RAILS	MT	200	
SECTION 3	STEEL BOLTS	NO.	1000	
SECTION 4	STEEL NUTS	NO.	1000	
SECTION 5	STEEL WELDS	MT	50	
SECTION 6	STEEL CONNECTIONS	NO.	100	
SECTION 7	STEEL BRACKETS	NO.	100	
SECTION 8	STEEL ANCHORS	NO.	100	
SECTION 9	STEEL PLATES	SQ. METRE	100	
SECTION 10	STEEL CHANNELS	MT	200	
SECTION 11	STEEL BEAMS	MT	200	
SECTION 12	STEEL COLUMNS	MT	200	
SECTION 13	STEEL TRUSSES	MT	200	
SECTION 14	STEEL ROOFING	MT	200	
SECTION 15	STEEL WALLING	MT	200	
SECTION 16	STEEL FLOORING	MT	200	
SECTION 17	STEEL STAIRS	MT	200	
SECTION 18	STEEL LIFTS	MT	200	
SECTION 19	STEEL HANDRAILS	MT	200	
SECTION 20	STEEL GUARDS	MT	200	

ENGRAVER TO ADD AS PER QC REQUIREMENT

200

45

25

180

375

100

25

10

270

SEE 2641-97-1184

CONSANI ENGINEERING (PTY) LTD
 4508 WIND CAVE
 SOUTH AFRICA

Country of manufacture: South Africa
 Min. model/work No.: 11/2013
 Date of manufacture: 19/05/2013
 Register No. (Ghana): 1630/2008 to 21/02/09

Tank design code: CFR49, A2C, RD/ADR
 Tank type: US DOT 104D1 MGC MD TYPE I

Capacity & mass
 Total measured water capacity at 20°C: 100 Litres / 2.64 US Gallons
 Tank mass: 100 kg / 220 lbs
 Maximum payload: 100 kg / 220 lbs
 Maximum gross mass: 200 kg / 440 lbs

Tank pressure & temperature (WSP)
 Hydrostatic test pressure: 1.5 bar / 21.75 psi
 Max. product temp. (Ambient): 100°C / 212°F
 Manufacturing design temp: 100°C / 212°F

Stream tube pressure & temperature (WSP)
 Hydrostatic test pressure: 1.5 bar / 21.75 psi
 Steam saturation temperature: 100°C / 212°F

Connections
 Bottom outlet: 1" / 25.4 mm
 Top outlet: 1" / 25.4 mm
 Airline: 1/8" / 3.175 mm
 Steam tube: 1" / 25.4 mm

Approval authority: US DOT, RD/ADR TC, APR 800
 Inspection authority: BUREAU VERITAS
 Regulatory jurisdiction & approval permit numbers: 2008 101-25-41
 UN DOT & 100 type cert. No.: 11/2013/2013
 RD/ADR type certificate No.: 11/2013/2013
 UN approval railway code: 11/2013/2013
 Inspection authority type approval No.: 11/2013/2013
 Country of approval: SOUTH AFRICA
 US DOT approval No.: 11/2013/2013

Hydrostatic pressure test date: 19/05/2013
 Inspection authority witness mark: [Signature]

Inspection & test date to CFR49, MGC, RD/ADR: 19/05/2013
 Initial inspection & test date: 19/05/2013
 Periodic inspection & test date: 19/05/2013
 2.5 Year test date: 19/05/2013
 Witness mark: [Signature]
 3 Year test date: 19/05/2013
 Witness mark: [Signature]
 TC impact approved: No
 No librar content

ENGRAVER TO REMOVE 'UN DOT'

GSC SAFETY APPROVAL

Approval reference: F/94/1729/94
 Date manufactured: *
 Identification No.: ULF 24.4.36
 Maximum gross mass: 36 000 kg / 79 365 lbs
 Allowable stacking: 192 000 kg / 423 290 lbs
 Weight for 1.8g: 15 290 kg / 33 710 lbs
 Racking test load value: 15 290 kg / 33 710 lbs
 Longitudinal inertia & lateral inertia tested
 Next exam. due date: *
 Mark: *

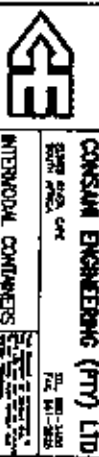
APPROVAL FOR TRANSPORT UNDER CUSTOMS SEAL

GR/C 1806 BY/1994

Type: ULF 24.4.36 Manufacturer's number of the container: P

Applicable Products of classes 3, 6.1, 8 & 9

ENGRAVER TO ADD 'P'



CONSANI ENGINEERING (PTY) LTD
 4508 WIND CAVE
 10100 RIVINGTONS
 SANDHURST, SOUTH AFRICA
 TEL: 011 2641-1204
 FAX: 011 2641-1204
 EMAIL: SALES@CONSANI.CO.ZA
 WWW.CONSANI.CO.ZA

GENERAL DATA PLATE

QUANTITIES SHOWN ARE FOR 1-OFF T.C.
 20 OFF T.C. IN CONTRACT.

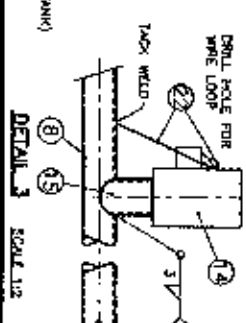
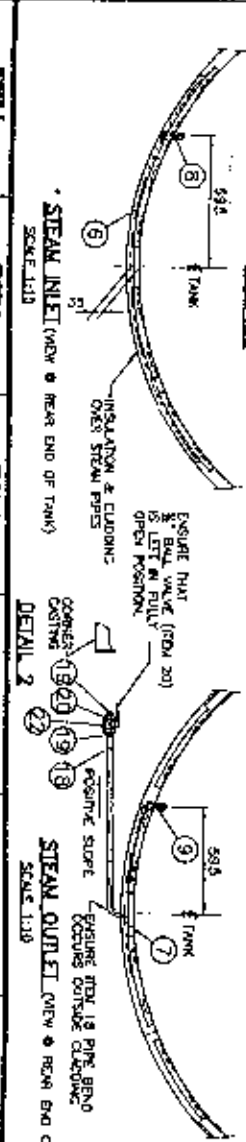
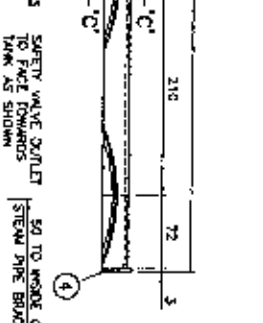
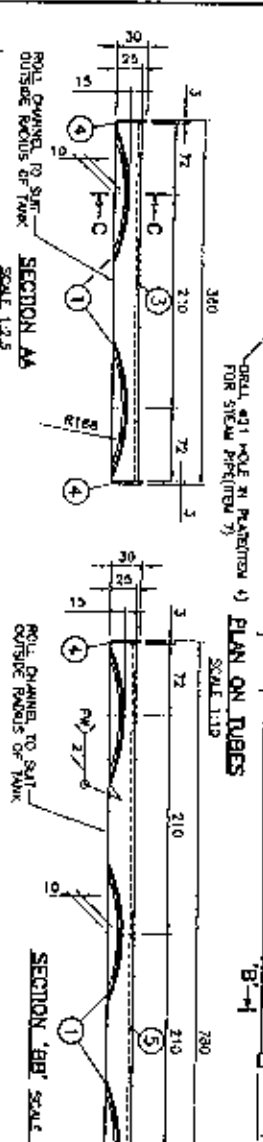
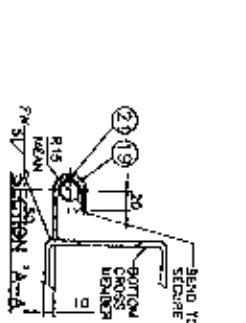
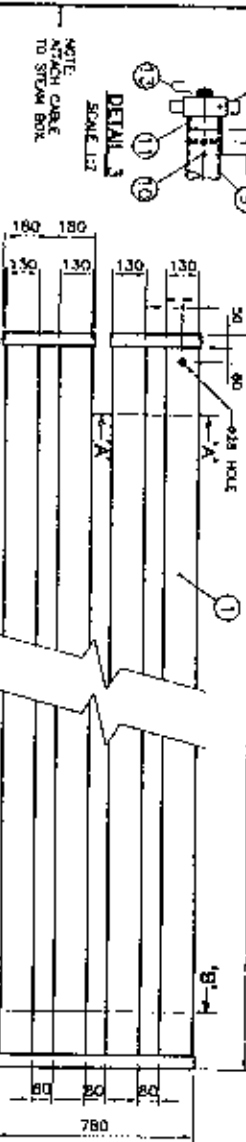
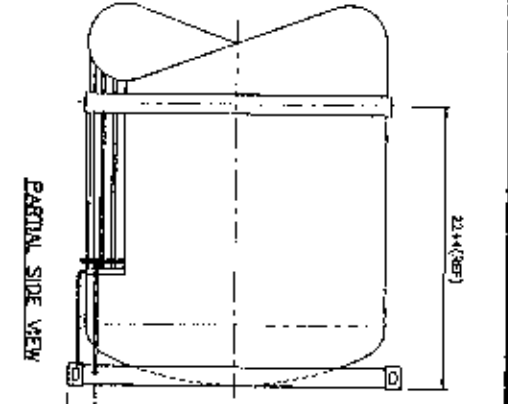
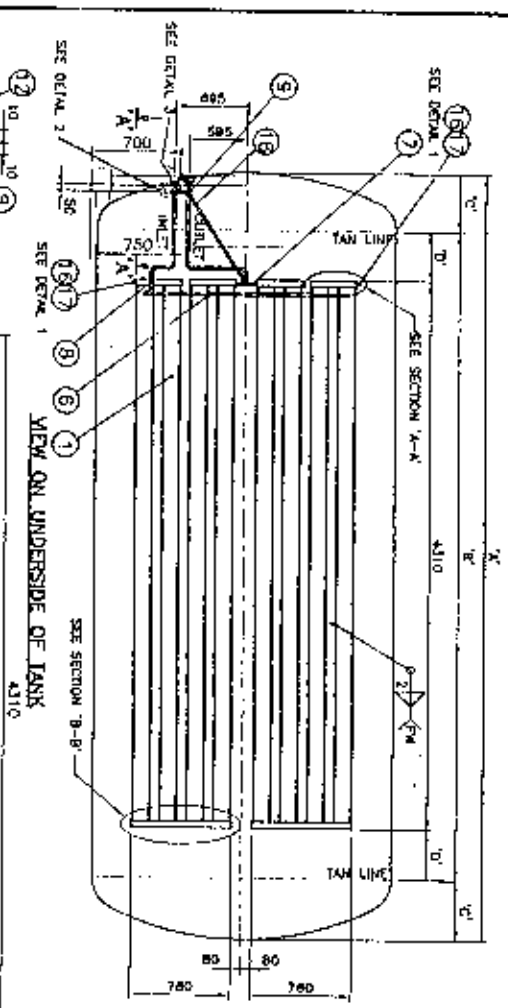
NOTE

MATERIAL SPECIFICATION

ITEM NO.	DESCRIPTION	QUANTITY	REMARKS
1	STEEL SHEET PILING	100	
2	STEEL RAILS	200	
3	STEEL BOLTS	1000	
4	STEEL NUTS	1000	
5	STEEL WELDS	50	
6	STEEL CONNECTIONS	100	
7	STEEL BRACKETS	100	
8	STEEL ANCHORS	100	
9	STEEL PLATES	100	
10	STEEL CHANNELS	200	
11	STEEL BEAMS	200	
12	STEEL COLUMNS	200	
13	STEEL TRUSSES	200	
14	STEEL ROOFING	200	
15	STEEL WALLING	200	
16	STEEL FLOORING	200	
17	STEEL STAIRS	200	
18	STEEL LIFTS	200	
19	STEEL HANDRAILS	200	
20	STEEL GUARDS	200	

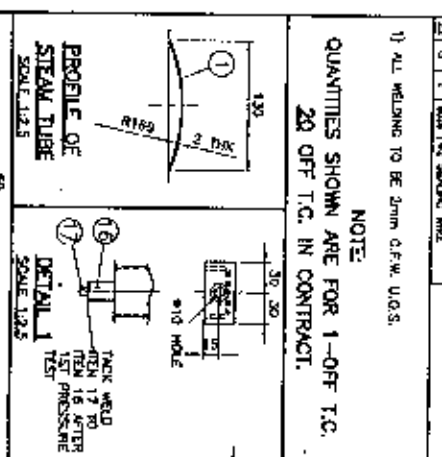
PARTS LIST

ITEM NO.	DESCRIPTION	QUANTITY	REMARKS
1	STEEL SHEET PILING	100	
2	STEEL RAILS	200	
3	STEEL BOLTS	1000	
4	STEEL NUTS	1000	
5	STEEL WELDS	50	
6	STEEL CONNECTIONS	100	
7	STEEL BRACKETS	100	
8	STEEL ANCHORS	100	
9	STEEL PLATES	100	
10	STEEL CHANNELS	200	
11	STEEL BEAMS	200	
12	STEEL COLUMNS	200	
13	STEEL TRUSSES	200	
14	STEEL ROOFING	200	
15	STEEL WALLING	200	
16	STEEL FLOORING	200	
17	STEEL STAIRS	200	
18	STEEL LIFTS	200	
19	STEEL HANDRAILS	200	
20	STEEL GUARDS	200	



NO.	DESCRIPTION	QTY	UNIT	REMARKS
1	PLATE 316L SS	1	1.20	
2	PLATE 316L SS	2	1.20	
3	PLATE 316L SS	4	1.20	
4	PLATE 316L SS	4	1.20	
5	PLATE 316L SS	8	1.20	
6	PLATE 316L SS	1	1.20	
7	PLATE 316L SS	1	1.20	
8	PLATE 316L SS	1	1.20	
9	PLATE 316L SS	1	1.20	
10	PLATE 316L SS	1	1.20	
11	PLATE 316L SS	1	1.20	
12	PLATE 316L SS	1	1.20	
13	PLATE 316L SS	1	1.20	
14	PLATE 316L SS	1	1.20	
15	PLATE 316L SS	1	1.20	
16	PLATE 316L SS	1	1.20	
17	PLATE 316L SS	1	1.20	
18	PLATE 316L SS	1	1.20	
19	PLATE 316L SS	1	1.20	
20	PLATE 316L SS	1	1.20	
21	PLATE 316L SS	1	1.20	
22	PLATE 316L SS	1	1.20	
23	PLATE 316L SS	1	1.20	
24	PLATE 316L SS	1	1.20	
25	PLATE 316L SS	1	1.20	
26	PLATE 316L SS	1	1.20	
27	PLATE 316L SS	1	1.20	
28	PLATE 316L SS	1	1.20	
29	PLATE 316L SS	1	1.20	
30	PLATE 316L SS	1	1.20	
31	PLATE 316L SS	1	1.20	
32	PLATE 316L SS	1	1.20	

MATERIAL SPECIFICATION			
NO.	DESCRIPTION	QTY	UNIT
1	BRONZE	1	1.20
2	ASTM A307-50A	1	1.20
3	BRASS	1	1.20
4	STEEL PIPE	1	1.20
5	STEEL PIPE	1	1.20
6	STEEL PIPE	1	1.20
7	STEEL PIPE	1	1.20
8	STEEL PIPE	1	1.20
9	STEEL PIPE	1	1.20
10	STEEL PIPE	1	1.20
11	STEEL PIPE	1	1.20
12	STEEL PIPE	1	1.20
13	STEEL PIPE	1	1.20
14	STEEL PIPE	1	1.20
15	STEEL PIPE	1	1.20
16	STEEL PIPE	1	1.20
17	STEEL PIPE	1	1.20
18	STEEL PIPE	1	1.20
19	STEEL PIPE	1	1.20
20	STEEL PIPE	1	1.20
21	STEEL PIPE	1	1.20
22	STEEL PIPE	1	1.20
23	STEEL PIPE	1	1.20
24	STEEL PIPE	1	1.20
25	STEEL PIPE	1	1.20
26	STEEL PIPE	1	1.20
27	STEEL PIPE	1	1.20
28	STEEL PIPE	1	1.20
29	STEEL PIPE	1	1.20
30	STEEL PIPE	1	1.20
31	STEEL PIPE	1	1.20
32	STEEL PIPE	1	1.20



CONSAM ENGINEERING (PTY) LTD

INDUSTRIAL ENGINEERS

STEAM HEATING ARRANGEMENT

HEATING AREA ~ 8m²

STEAM CONTACT AREA ~ 4.3m²

W.C. 254

2841-97-1525

MATERIAL SPECIFICATION

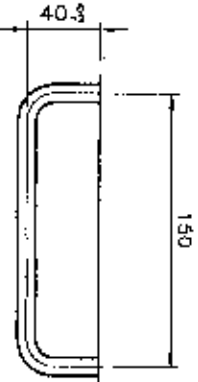
F	BS 4360 GR 500	
H	CONR. QUALITY U.S.	
Z	5/5 304	

PARTS LIST

No. QTY	UNIT	BOB	DESCRIPTION	DIMENSIONS	REFERENCE
1	2	H	BOB	32x32x2.5x2286	
2	7	Z	LADDER STRINGER	PL2x40x300	B.O.P.
3	4	Z	POST	MT0x35LG	
4	8	Z	FLAT WASHER	MT0	
5	4	Z	NUT	MT0	
6	4	Z	LADDER BRACKET	PL4.5x40x107	
7	4	Z	LADDER BRACKET	PL4.5x40x85LG	
8	1	F	STOCK HANDLE	ø10 x 240	

NOTE:
 ALL WELDING TO BE 3mm C.F.W. U.O.S.
 NO PINHOLES IN WELDING
 ALL SHARP EDGES TO BE ROUNDED.
 WORKS TO MANUFACTURE ITEMS 1, 6 & 7

NOTE:
 QUANTITIES SHOWN ARE FOR 1-OFF T.C.
 20 OFF T.C. IN CONTRACT.



ITEM 8
 SCALE: 1:2

CONSANI ENGINEERING (PTY) LTD

8525 RIVER DATE
 SOUTH AFRICA
 TEL: 591-3400
 FAX: 591-2025



INTERMEDAL CONTAINERS

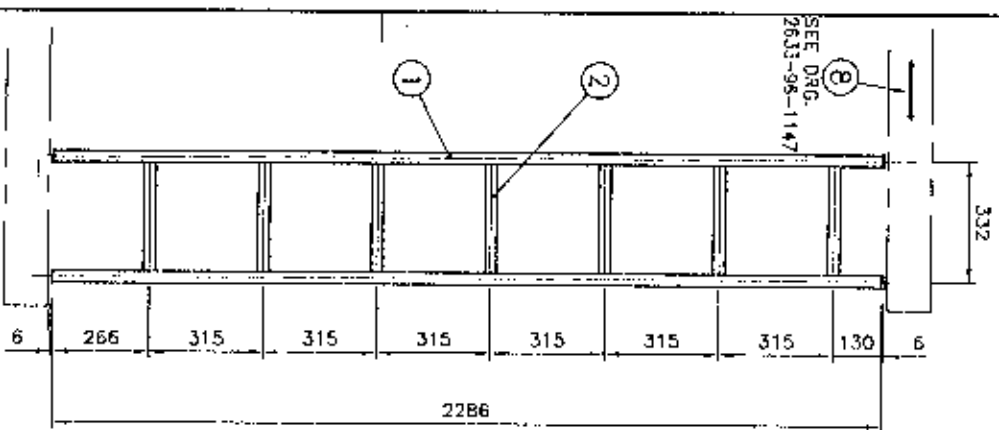
155 ROBINSON ROAD
 SINGAPORE 048863
 TEL: 2334333
 FAX: 2334333

CON: 26411408

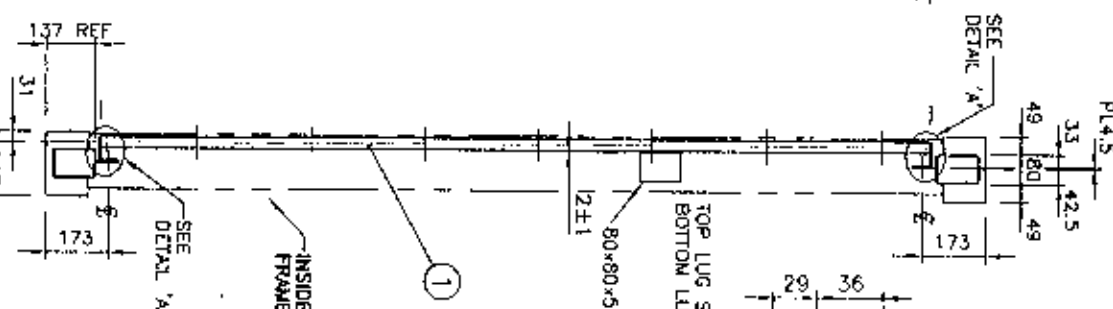
LADDER AND HANDLE DETAIL

8 1/2' FRAME

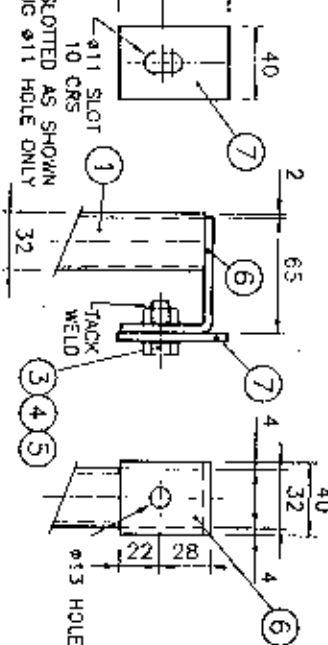
CLIENT	W.O. 2641	SCALE	1:10	DRAWING NO.	2641-97-1408
		SCALE	1:2	DRAWING NO.	
		CHECKED			
		DATE	03/02/97		



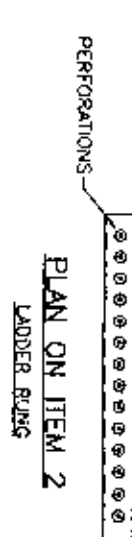
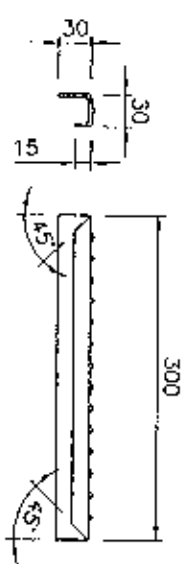
SEE DRG.
 2633-96-1147



SIDE VIEW

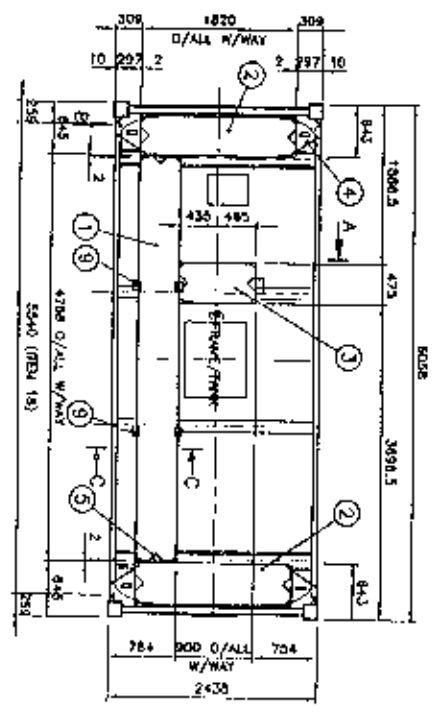


DETAIL 'A'
 SCALE: 1:2

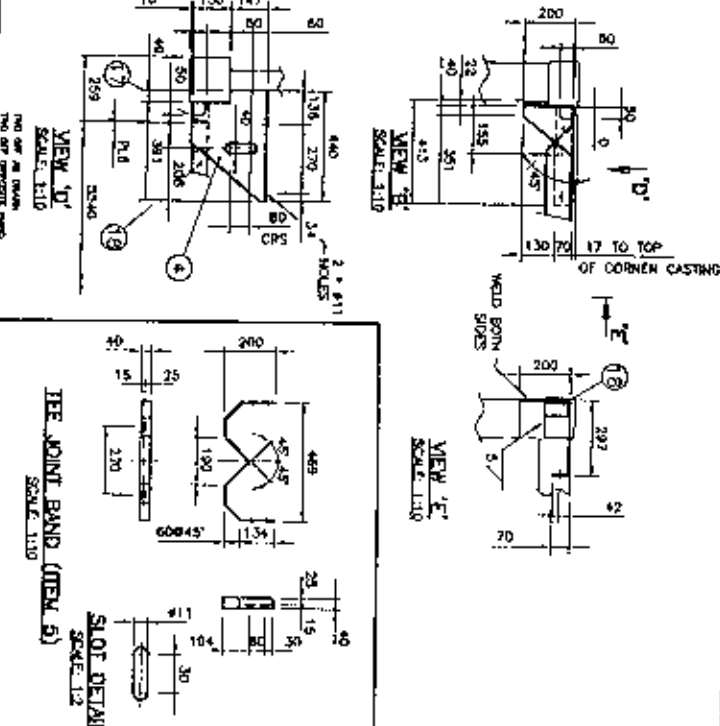


VIEW ON FRONT OF LADDER RUNG

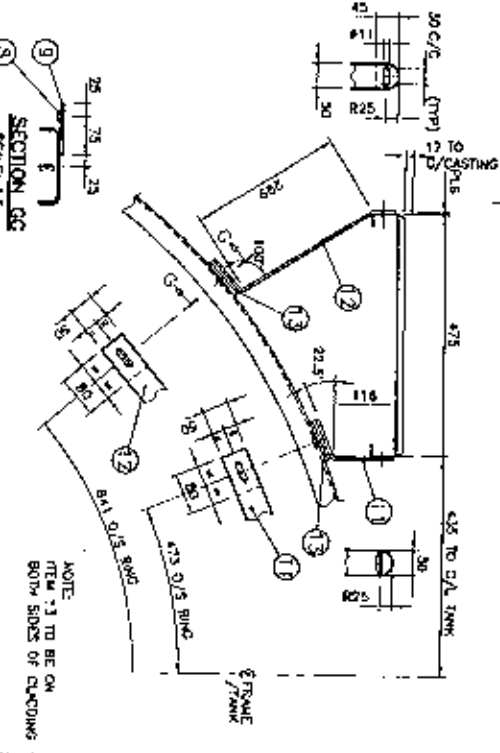
REVISION A		DRAWING APPROVAL	
AMENDMENT	DATE	AMENDMENT	SIGNATURE DATE
DESIGN		DESIGN	
CHECKED		QUALITY	
ISSUED FOR MANUFACTURE		PERFORMANCE	
CONTRACTS		CONTRACTS	
APPROVED		CONTRACTS	
		CLIENT	



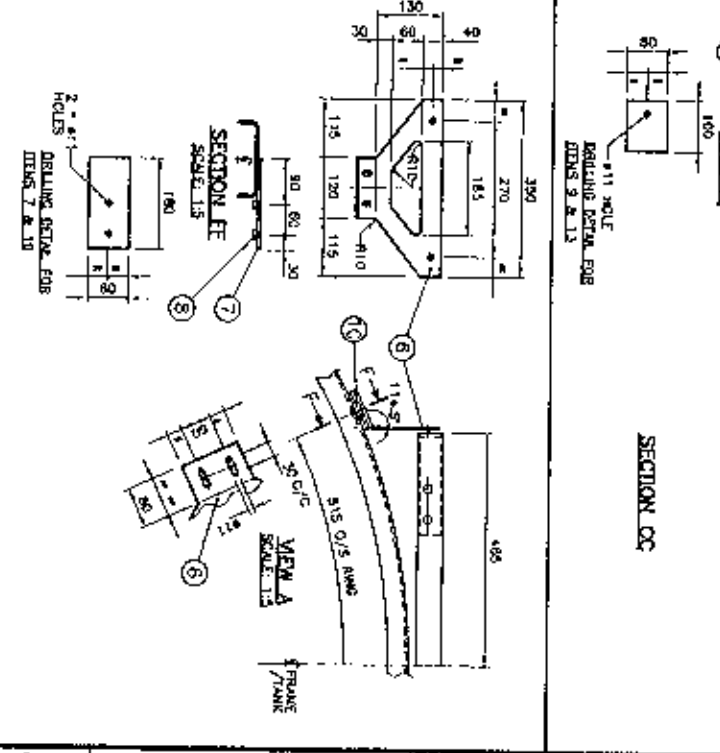
PLAN ON TANK CONTAINER
SCALE 1:30



VIEW 'A' SCALE 1:10
VIEW 'B' SCALE 1:10
VIEW 'C' SCALE 1:10
VIEW 'D' SCALE 1:10
THE JOINT BAND (ITEM 5)
SCALE 1:10
SLOT DETAIL
SCALE 1:2



SECTION OC
SCALE 1:5
SECTION OG
SCALE 1:5
NOTE:
ITEM '3' TO BE ON
BOTH SIDES OF CLADDING

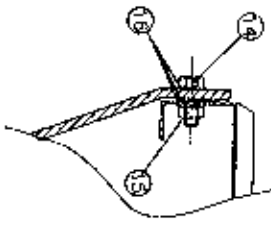


SECTION EE
SCALE 1:5
SECTION FF
SCALE 1:5
2 - 6\"/>

MATERIAL SPECIFICATION

ITEM	DESCRIPTION	QUANTITY	REMARKS
1	STEEL SHEET	4786 SQ. FT.	
2	STEEL SHEET	4786 SQ. FT.	
3	STEEL SHEET	4786 SQ. FT.	
4	STEEL SHEET	4786 SQ. FT.	
5	STEEL SHEET	4786 SQ. FT.	
6	STEEL SHEET	4786 SQ. FT.	
7	STEEL SHEET	4786 SQ. FT.	
8	STEEL SHEET	4786 SQ. FT.	
9	STEEL SHEET	4786 SQ. FT.	
10	STEEL SHEET	4786 SQ. FT.	
11	STEEL SHEET	4786 SQ. FT.	
12	STEEL SHEET	4786 SQ. FT.	
13	STEEL SHEET	4786 SQ. FT.	
14	STEEL SHEET	4786 SQ. FT.	
15	STEEL SHEET	4786 SQ. FT.	
16	STEEL SHEET	4786 SQ. FT.	
17	STEEL SHEET	4786 SQ. FT.	
18	STEEL SHEET	4786 SQ. FT.	
19	STEEL SHEET	4786 SQ. FT.	

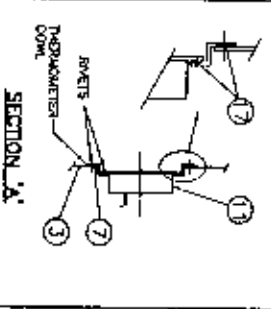
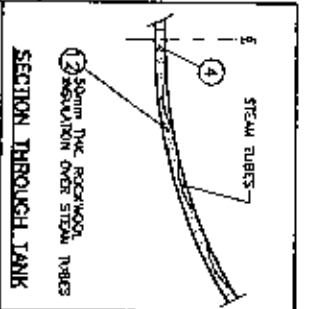
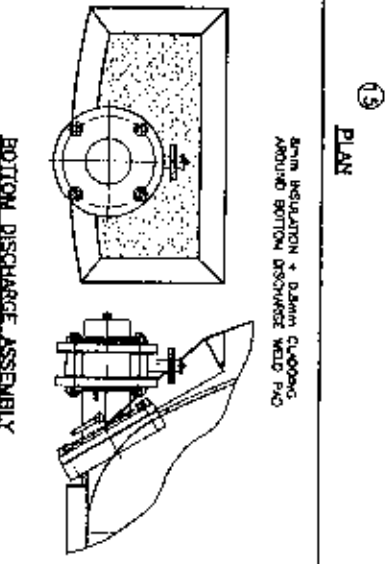
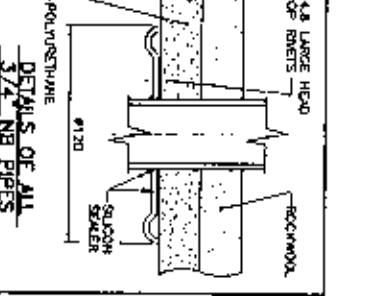
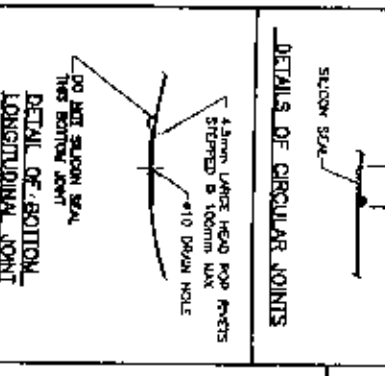
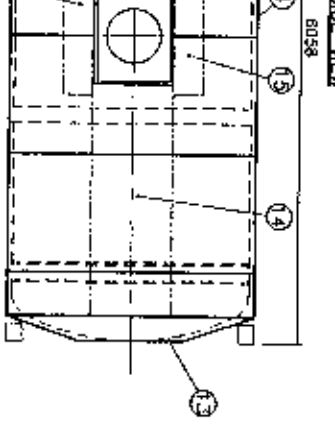
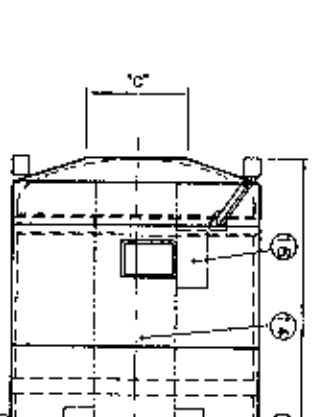
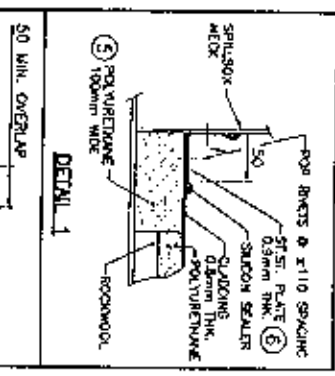
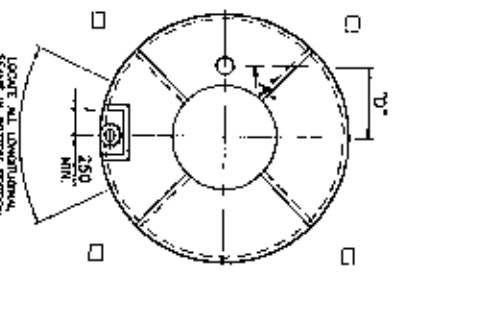
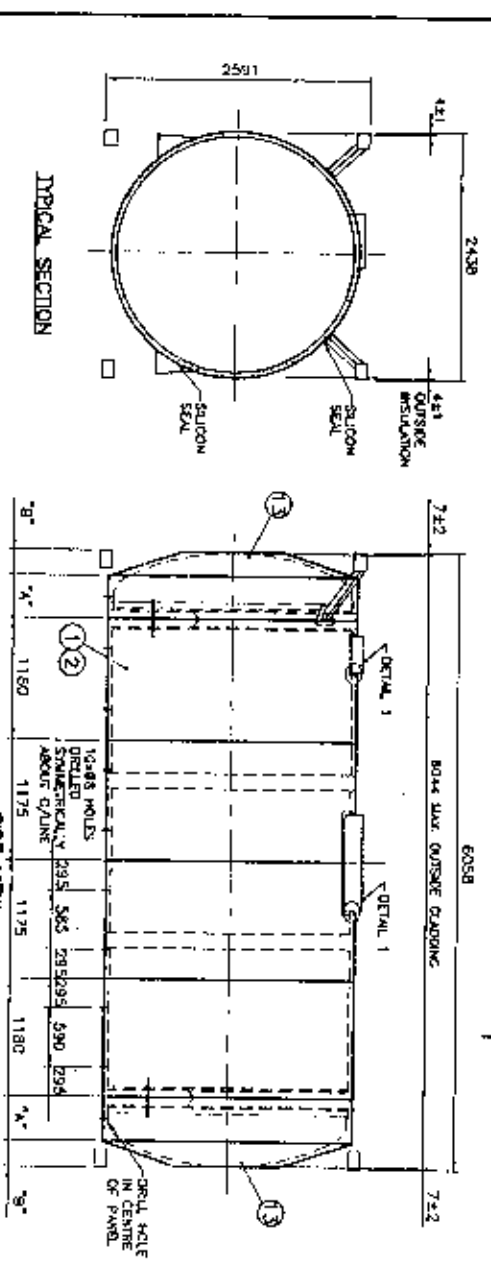
1. ALL WELDING TO BE SHOWN C/F.W. U.O.S.
2. ITEMS 5, 6, 11 & 12 TO BE HOT DIP GALVANIZED
3. ALL SLOTTED HOLES TO BE SMOOTH SCALED.



NOTE:
QUANTITIES SHOWN ARE FOR 1-OFF T.C.
20 OFF T.C. IN CONTRACT.

CONSAM ENGINEERING (PTY) LTD
 24 000 LITRE FRAME TANK
 WALKWAY DETAILS
 TEL: 081-540 2841
 FAX: 081-540 2841

REVISION	NO.	DESCRIPTION	DATE
1	1	ISSUED FOR TENDER	15/01/2011
2	2	REVISED PER COMMENTS	16/01/2011
3	3	REVISED PER COMMENTS	17/01/2011
4	4	REVISED PER COMMENTS	18/01/2011
5	5	REVISED PER COMMENTS	19/01/2011
6	6	REVISED PER COMMENTS	20/01/2011
7	7	REVISED PER COMMENTS	21/01/2011
8	8	REVISED PER COMMENTS	22/01/2011
9	9	REVISED PER COMMENTS	23/01/2011
10	10	REVISED PER COMMENTS	24/01/2011
11	11	REVISED PER COMMENTS	25/01/2011
12	12	REVISED PER COMMENTS	26/01/2011
13	13	REVISED PER COMMENTS	27/01/2011
14	14	REVISED PER COMMENTS	28/01/2011
15	15	REVISED PER COMMENTS	29/01/2011
16	16	REVISED PER COMMENTS	30/01/2011
17	17	REVISED PER COMMENTS	31/01/2011
18	18	REVISED PER COMMENTS	01/02/2011
19	19	REVISED PER COMMENTS	02/02/2011
20	20	REVISED PER COMMENTS	03/02/2011
21	21	REVISED PER COMMENTS	04/02/2011
22	22	REVISED PER COMMENTS	05/02/2011
23	23	REVISED PER COMMENTS	06/02/2011
24	24	REVISED PER COMMENTS	07/02/2011
25	25	REVISED PER COMMENTS	08/02/2011
26	26	REVISED PER COMMENTS	09/02/2011
27	27	REVISED PER COMMENTS	10/02/2011
28	28	REVISED PER COMMENTS	11/02/2011
29	29	REVISED PER COMMENTS	12/02/2011
30	30	REVISED PER COMMENTS	13/02/2011
31	31	REVISED PER COMMENTS	14/02/2011
32	32	REVISED PER COMMENTS	15/02/2011
33	33	REVISED PER COMMENTS	16/02/2011
34	34	REVISED PER COMMENTS	17/02/2011
35	35	REVISED PER COMMENTS	18/02/2011
36	36	REVISED PER COMMENTS	19/02/2011
37	37	REVISED PER COMMENTS	20/02/2011
38	38	REVISED PER COMMENTS	21/02/2011
39	39	REVISED PER COMMENTS	22/02/2011
40	40	REVISED PER COMMENTS	23/02/2011
41	41	REVISED PER COMMENTS	24/02/2011
42	42	REVISED PER COMMENTS	25/02/2011
43	43	REVISED PER COMMENTS	26/02/2011
44	44	REVISED PER COMMENTS	27/02/2011
45	45	REVISED PER COMMENTS	28/02/2011
46	46	REVISED PER COMMENTS	29/02/2011
47	47	REVISED PER COMMENTS	01/03/2011
48	48	REVISED PER COMMENTS	02/03/2011
49	49	REVISED PER COMMENTS	03/03/2011
50	50	REVISED PER COMMENTS	04/03/2011
51	51	REVISED PER COMMENTS	05/03/2011
52	52	REVISED PER COMMENTS	06/03/2011
53	53	REVISED PER COMMENTS	07/03/2011
54	54	REVISED PER COMMENTS	08/03/2011
55	55	REVISED PER COMMENTS	09/03/2011
56	56	REVISED PER COMMENTS	10/03/2011
57	57	REVISED PER COMMENTS	11/03/2011
58	58	REVISED PER COMMENTS	12/03/2011
59	59	REVISED PER COMMENTS	13/03/2011
60	60	REVISED PER COMMENTS	14/03/2011
61	61	REVISED PER COMMENTS	15/03/2011
62	62	REVISED PER COMMENTS	16/03/2011
63	63	REVISED PER COMMENTS	17/03/2011
64	64	REVISED PER COMMENTS	18/03/2011
65	65	REVISED PER COMMENTS	19/03/2011
66	66	REVISED PER COMMENTS	20/03/2011
67	67	REVISED PER COMMENTS	21/03/2011
68	68	REVISED PER COMMENTS	22/03/2011
69	69	REVISED PER COMMENTS	23/03/2011
70	70	REVISED PER COMMENTS	24/03/2011
71	71	REVISED PER COMMENTS	25/03/2011
72	72	REVISED PER COMMENTS	26/03/2011
73	73	REVISED PER COMMENTS	27/03/2011
74	74	REVISED PER COMMENTS	28/03/2011
75	75	REVISED PER COMMENTS	29/03/2011
76	76	REVISED PER COMMENTS	30/03/2011
77	77	REVISED PER COMMENTS	31/03/2011
78	78	REVISED PER COMMENTS	01/04/2011
79	79	REVISED PER COMMENTS	02/04/2011
80	80	REVISED PER COMMENTS	03/04/2011
81	81	REVISED PER COMMENTS	04/04/2011
82	82	REVISED PER COMMENTS	05/04/2011
83	83	REVISED PER COMMENTS	06/04/2011
84	84	REVISED PER COMMENTS	07/04/2011
85	85	REVISED PER COMMENTS	08/04/2011
86	86	REVISED PER COMMENTS	09/04/2011
87	87	REVISED PER COMMENTS	10/04/2011
88	88	REVISED PER COMMENTS	11/04/2011
89	89	REVISED PER COMMENTS	12/04/2011
90	90	REVISED PER COMMENTS	13/04/2011
91	91	REVISED PER COMMENTS	14/04/2011
92	92	REVISED PER COMMENTS	15/04/2011
93	93	REVISED PER COMMENTS	16/04/2011
94	94	REVISED PER COMMENTS	17/04/2011
95	95	REVISED PER COMMENTS	18/04/2011
96	96	REVISED PER COMMENTS	19/04/2011
97	97	REVISED PER COMMENTS	20/04/2011
98	98	REVISED PER COMMENTS	21/04/2011
99	99	REVISED PER COMMENTS	22/04/2011
100	100	REVISED PER COMMENTS	23/04/2011



MATERIAL SPECIFICATION

NO	QTY	UNIT	DESCRIPTION	QUANTITIES	REFERENCE
1	1	m ²	ROCKWOOL INSULATION 25mm x 80mm x 100mm		
2	1	m ²	POLYURETHANE INSULATION 25mm x 80mm x 100mm		
3	1	m ²	ROCKWOOL INSULATION 25mm x 80mm x 100mm		
4	1	m ²	POLYURETHANE INSULATION 25mm x 80mm x 100mm		
5	1	m ²	POLYURETHANE INSULATION 25mm x 80mm x 100mm		
6	1	m ²	POLYURETHANE INSULATION 25mm x 80mm x 100mm		
7	1	m ²	POLYURETHANE INSULATION 25mm x 80mm x 100mm		
8	1	m ²	POLYURETHANE INSULATION 25mm x 80mm x 100mm		
9	1	m ²	POLYURETHANE INSULATION 25mm x 80mm x 100mm		
10	1	m ²	POLYURETHANE INSULATION 25mm x 80mm x 100mm		
11	1	m ²	POLYURETHANE INSULATION 25mm x 80mm x 100mm		
12	1	m ²	POLYURETHANE INSULATION 25mm x 80mm x 100mm		
13	1	m ²	POLYURETHANE INSULATION 25mm x 80mm x 100mm		
14	1	m ²	POLYURETHANE INSULATION 25mm x 80mm x 100mm		
15	1	m ²	POLYURETHANE INSULATION 25mm x 80mm x 100mm		
16	1	m ²	POLYURETHANE INSULATION 25mm x 80mm x 100mm		
17	1	m ²	POLYURETHANE INSULATION 25mm x 80mm x 100mm		
18	1	m ²	POLYURETHANE INSULATION 25mm x 80mm x 100mm		
19	1	m ²	POLYURETHANE INSULATION 25mm x 80mm x 100mm		
20	1	m ²	POLYURETHANE INSULATION 25mm x 80mm x 100mm		
21	1	m ²	POLYURETHANE INSULATION 25mm x 80mm x 100mm		
22	1	m ²	POLYURETHANE INSULATION 25mm x 80mm x 100mm		
23	1	m ²	POLYURETHANE INSULATION 25mm x 80mm x 100mm		
24	1	m ²	POLYURETHANE INSULATION 25mm x 80mm x 100mm		
25	1	m ²	POLYURETHANE INSULATION 25mm x 80mm x 100mm		
26	1	m ²	POLYURETHANE INSULATION 25mm x 80mm x 100mm		
27	1	m ²	POLYURETHANE INSULATION 25mm x 80mm x 100mm		
28	1	m ²	POLYURETHANE INSULATION 25mm x 80mm x 100mm		
29	1	m ²	POLYURETHANE INSULATION 25mm x 80mm x 100mm		
30	1	m ²	POLYURETHANE INSULATION 25mm x 80mm x 100mm		
31	1	m ²	POLYURETHANE INSULATION 25mm x 80mm x 100mm		
32	1	m ²	POLYURETHANE INSULATION 25mm x 80mm x 100mm		
33	1	m ²	POLYURETHANE INSULATION 25mm x 80mm x 100mm		
34	1	m ²	POLYURETHANE INSULATION 25mm x 80mm x 100mm		
35	1	m ²	POLYURETHANE INSULATION 25mm x 80mm x 100mm		
36	1	m ²	POLYURETHANE INSULATION 25mm x 80mm x 100mm		
37	1	m ²	POLYURETHANE INSULATION 25mm x 80mm x 100mm		
38	1	m ²	POLYURETHANE INSULATION 25mm x 80mm x 100mm		
39	1	m ²	POLYURETHANE INSULATION 25mm x 80mm x 100mm		
40	1	m ²	POLYURETHANE INSULATION 25mm x 80mm x 100mm		
41	1	m ²	POLYURETHANE INSULATION 25mm x 80mm x 100mm		
42	1	m ²	POLYURETHANE INSULATION 25mm x 80mm x 100mm		
43	1	m ²	POLYURETHANE INSULATION 25mm x 80mm x 100mm		
44	1	m ²	POLYURETHANE INSULATION 25mm x 80mm x 100mm		
45	1	m ²	POLYURETHANE INSULATION 25mm x 80mm x 100mm		
46	1	m ²	POLYURETHANE INSULATION 25mm x 80mm x 100mm		
47	1	m ²	POLYURETHANE INSULATION 25mm x 80mm x 100mm		
48	1	m ²	POLYURETHANE INSULATION 25mm x 80mm x 100mm		
49	1	m ²	POLYURETHANE INSULATION 25mm x 80mm x 100mm		
50	1	m ²	POLYURETHANE INSULATION 25mm x 80mm x 100mm		

NO	QTY	UNIT	DESCRIPTION	QUANTITIES	REFERENCE
1	1	m ²	ROCKWOOL INSULATION 25mm x 80mm x 100mm		
2	1	m ²	POLYURETHANE INSULATION 25mm x 80mm x 100mm		
3	1	m ²	ROCKWOOL INSULATION 25mm x 80mm x 100mm		
4	1	m ²	POLYURETHANE INSULATION 25mm x 80mm x 100mm		
5	1	m ²	POLYURETHANE INSULATION 25mm x 80mm x 100mm		
6	1	m ²	POLYURETHANE INSULATION 25mm x 80mm x 100mm		
7	1	m ²	POLYURETHANE INSULATION 25mm x 80mm x 100mm		
8	1	m ²	POLYURETHANE INSULATION 25mm x 80mm x 100mm		
9	1	m ²	POLYURETHANE INSULATION 25mm x 80mm x 100mm		
10	1	m ²	POLYURETHANE INSULATION 25mm x 80mm x 100mm		
11	1	m ²	POLYURETHANE INSULATION 25mm x 80mm x 100mm		
12	1	m ²	POLYURETHANE INSULATION 25mm x 80mm x 100mm		
13	1	m ²	POLYURETHANE INSULATION 25mm x 80mm x 100mm		
14	1	m ²	POLYURETHANE INSULATION 25mm x 80mm x 100mm		
15	1	m ²	POLYURETHANE INSULATION 25mm x 80mm x 100mm		
16	1	m ²	POLYURETHANE INSULATION 25mm x 80mm x 100mm		
17	1	m ²	POLYURETHANE INSULATION 25mm x 80mm x 100mm		
18	1	m ²	POLYURETHANE INSULATION 25mm x 80mm x 100mm		
19	1	m ²	POLYURETHANE INSULATION 25mm x 80mm x 100mm		
20	1	m ²	POLYURETHANE INSULATION 25mm x 80mm x 100mm		
21	1	m ²	POLYURETHANE INSULATION 25mm x 80mm x 100mm		
22	1	m ²	POLYURETHANE INSULATION 25mm x 80mm x 100mm		
23	1	m ²	POLYURETHANE INSULATION 25mm x 80mm x 100mm		
24	1	m ²	POLYURETHANE INSULATION 25mm x 80mm x 100mm		
25	1	m ²	POLYURETHANE INSULATION 25mm x 80mm x 100mm		
26	1	m ²	POLYURETHANE INSULATION 25mm x 80mm x 100mm		
27	1	m ²	POLYURETHANE INSULATION 25mm x 80mm x 100mm		
28	1	m ²	POLYURETHANE INSULATION 25mm x 80mm x 100mm		
29	1	m ²	POLYURETHANE INSULATION 25mm x 80mm x 100mm		
30	1	m ²	POLYURETHANE INSULATION 25mm x 80mm x 100mm		
31	1	m ²	POLYURETHANE INSULATION 25mm x 80mm x 100mm		
32	1	m ²	POLYURETHANE INSULATION 25mm x 80mm x 100mm		
33	1	m ²	POLYURETHANE INSULATION 25mm x 80mm x 100mm		
34	1	m ²	POLYURETHANE INSULATION 25mm x 80mm x 100mm		
35	1	m ²	POLYURETHANE INSULATION 25mm x 80mm x 100mm		
36	1	m ²	POLYURETHANE INSULATION 25mm x 80mm x 100mm		
37	1	m ²	POLYURETHANE INSULATION 25mm x 80mm x 100mm		
38	1	m ²	POLYURETHANE INSULATION 25mm x 80mm x 100mm		
39	1	m ²	POLYURETHANE INSULATION 25mm x 80mm x 100mm		
40	1	m ²	POLYURETHANE INSULATION 25mm x 80mm x 100mm		
41	1	m ²	POLYURETHANE INSULATION 25mm x 80mm x 100mm		
42	1	m ²	POLYURETHANE INSULATION 25mm x 80mm x 100mm		
43	1	m ²	POLYURETHANE INSULATION 25mm x 80mm x 100mm		
44	1	m ²	POLYURETHANE INSULATION 25mm x 80mm x 100mm		
45	1	m ²	POLYURETHANE INSULATION 25mm x 80mm x 100mm		
46	1	m ²	POLYURETHANE INSULATION 25mm x 80mm x 100mm		
47	1	m ²	POLYURETHANE INSULATION 25mm x 80mm x 100mm		
48	1	m ²	POLYURETHANE INSULATION 25mm x 80mm x 100mm		
49	1	m ²	POLYURETHANE INSULATION 25mm x 80mm x 100mm		
50	1	m ²	POLYURETHANE INSULATION 25mm x 80mm x 100mm		

NOTE:

- THIS DRAWING TO BE READ IN CONJUNCTION WITH QWP 9 - 18
- USE ONE CUSTOMER PANEL AFTER EVERY THREE STANDARD PANELS. MAXIMUM DISTANCE BETWEEN TWO CUSTOMER PANELS TO BE 300mm. SHEARDS AND OTHER PANELS.
- WHERE POSSIBLE USE FULL SHEETS OF POLYURETHANE AND/OR ROCKWOOL ON SHELL/LINED END INSULATION.
- ALUMINIUM CLADDING COLOUR: PREPARED WHITE
- ALL ROCKWOOL INSULATION TO BE GLUED TO THE BARREL WITH PEZAX 439.

SECTION TO D/END CLADDING DETAIL

APPLY SILIXON TO PREVENT INGRESS OF WATER

DISPERSED END CLADDING

POP BRICKS AT #150 C/D & CUSTOMER PANELS AS REQUIRED

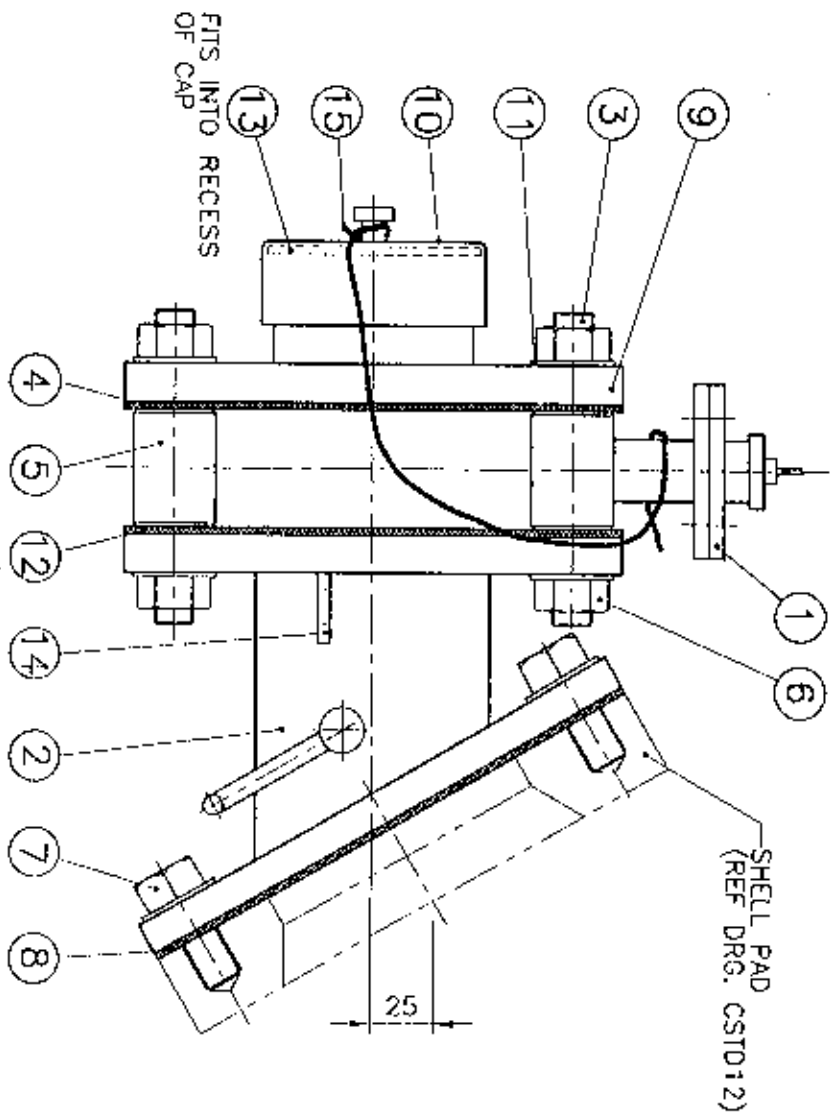
NOTE:

QUANTITIES SHOWN ARE FOR 1-QTF T.C. 2D OFF T.C. IN CONTRACT.

CONSAMI ENGINEERING (PTY) LTD
 24 000 LITRE FRAME TANK CONTAINER
 INSULATION DETAILS

INTERNATIONAL CONTRACTORS

2641-97-1222



MATERIAL CLASSIFICATION			
B	ASTM 240-316L	Y	S/S 316
C	ASTM A240-316	Z	S/S 304

ITEM NO	DESCRIPTION	MAT	REF
15	1 2mm THK ST/ST. CABLE	Z	
14	1 LUG WITH 14 HOLE	Y	B.O.P.
13	1 3" PRESSURE CAP GASKET		CSTD1095
12	1 3" BUTTERFLY VALVE INLET GASKET		CSTD1191
11	8 M16 FLAT WASHER	Y	B.O.P.
10	1 3" PRESSURE CAP		CSTD1136
9	1 SINGLE FLANGED ADAPTOR		CSTD465
8	1 3" FOOTVALVE GASKET		CSTD1193
7	4 M16*30 BOLT	Y	B.O.P.
6	8 M16 NUT	Y	B.O.P.
5	4 3" BUTTERFLY VALVE SPACING COLLAR		CSTD117
4	1 3" BUTTERFLY VALVE OUTLET GASKET		CSTD1192
3	4 3" BUTTERFLY VALVE STUD		CSTD43
2	1 30" 3" FOOTVALVE	B/CB	O.P.
1	1 3" BUTTERFLY VALVE	B/CB	O.P.

PARTS LIST

CONSANI ENGINEERING (PTY) LTD
 ELISES RIVER, CAPE
 SOUTH AFRICA
 TEL. 592-1001
 FAX. 591-2825

CONTAINER DIVISION
 CAD:

**3" (80 NB) BOTTOM OUTLET
 ARRANGEMENT. 30" DISCHARGE**

CLIENT:	SCALE 1:2	DRAWING NO.	REV
W.O.	DRAWN K.J.	CSTD 51	0
	CHECKED	DATE 25/03/94	

INSPECTION AUTHORITY

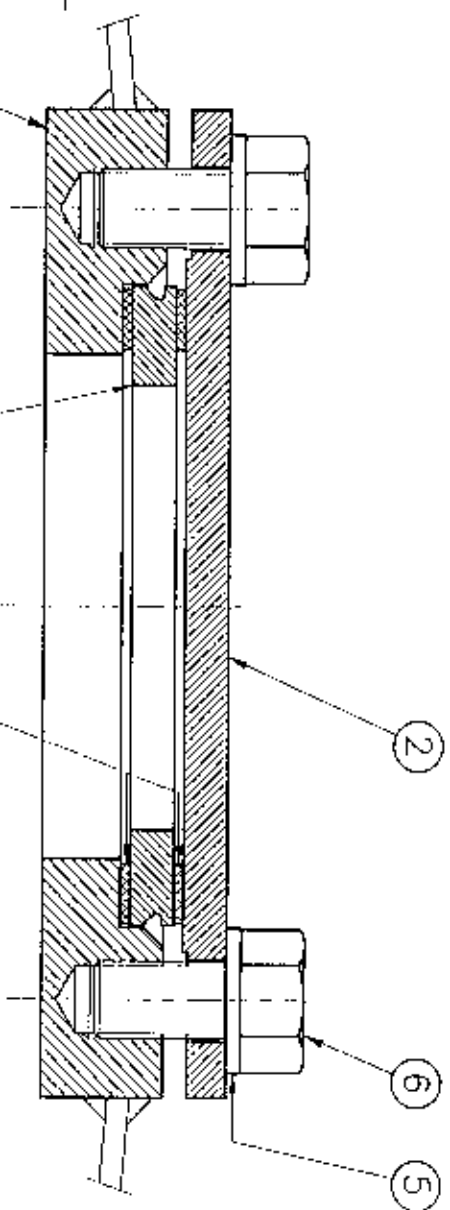
Lloyds Register
 CAPE TOWN A.M DONALDSON
 VERIFIED COPY OF APPROVED DRAWING

DRAWING APPROVAL

DESIGN	AUTHORITY	SIGNATURE	DATE
			24/4/94
QUALITY ASSURANCE	CONTRACTS		7/9
			1/9

BUREAU VERITAS
 INDUSTRIAL BRANCH
 SOUTH AFRICA

MATERIAL CLASSIFICATION		
Y	S/S 316	
Z	S/S 304	



SECTION THROUGH TOP DISCHARGE ASSEMBLY

ITEM QTY	DESCRIPTION	MAT	REF
6	4 SETSCREW M16 x 30lg	Y	B.O.P.
5	4 M16 WASHER MED. FLAT	Z	B.O.P.
4	2 GASKET		CSTD1198
3	1 SYPHON PIPE FLANGE		CSTD1015
2	1 BLIND FLANGE		CSTD4
1	1 TOP DISCHARGE WELD PAD		CSTD1008

PARTS LIST

CONSANI ENGINEERING (PTY) LTD
 ELISIES RIVER, CAPE
 SOUTH AFRICA
 TEL. 592-1001
 FAX. 591-2828

CONTAINER DIVISION
 CAD:

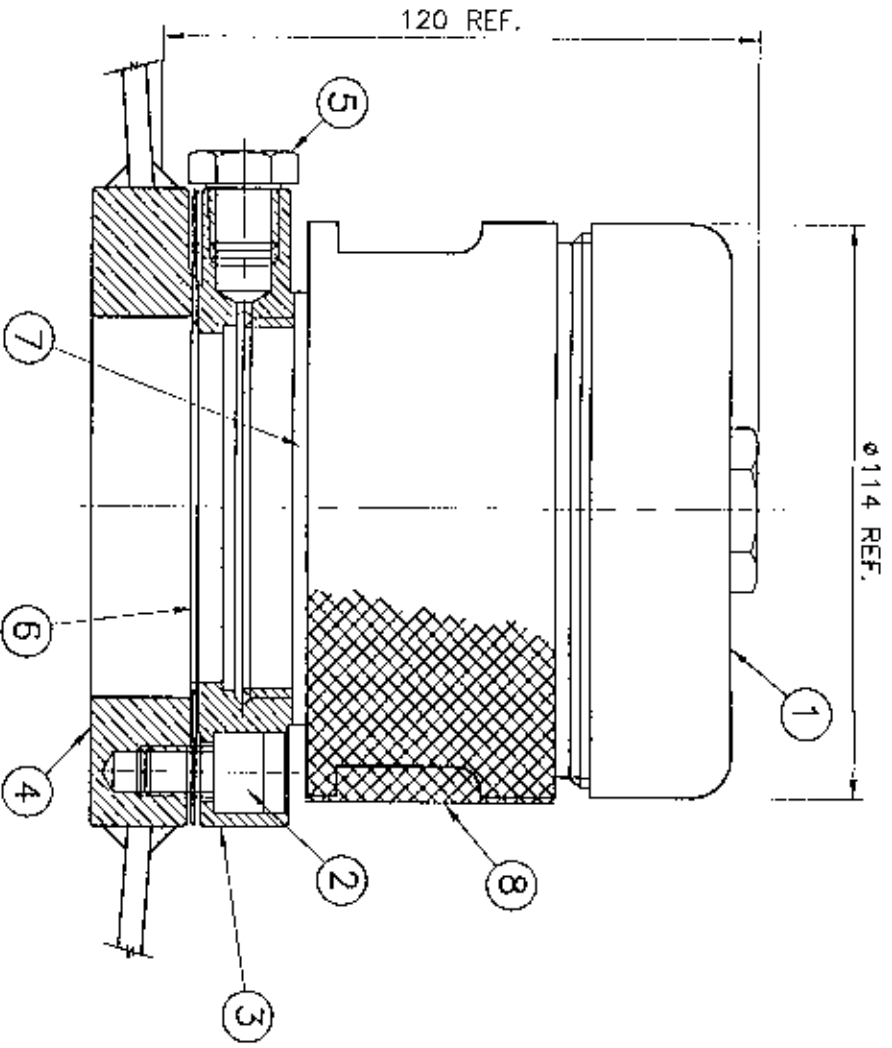
TOP DISCHARGE ASSEMBLY
 (BLANKED - OFF)

CLIENT	SCALE 1:1	DRAWING No.	REV
W. C.	DRAWN K.J.	CSTD 1058	A
	CHECKED <i>[Signature]</i>		
	DATE 23/05/94		

REVISION A			DRAWING APPROVAL			
AUTHORITY	SIGN.	DATE	DESCRIPTION	AUTHORITY	SIGNATURE	DATE
DESIGN						
QUALITY ASSURANCE						
CONTRACTS						
INSPECTION						



Lloyd's Register
 CAPE TOWN A.M. DONALDSON
 VERIFIED COPY OF APPROVED DRAWING



MATERIAL CLASSIFICATION

C	ASTM A240-316		

ITEM QTY	DESCRIPTION	MAT	REF
8 1	REMOVABLE FLASHPROOF GAUZE SCREEN		B.O.P.
7 1	GASKET (SUPP. WITH ITEM 1)		
6 1	GASKET		CSTD1195
5 1	1/4" NPT HEX PLUG	C	B.O.P.
4 1	SAFETY VALVE WELD PAD		CSTD329
3 1	ADAPTOR FLANGE		CSTD1061
2 6	M10x15 lg HEX CAP SCREW	C	B.O.P.
1 1	PRES./VAC. SAFETY VALVE	C	B.O.P.

PARTS LIST

CONSANI ENGINEERING (PTY) LTD
 ELSIES RIVER, CAPE
 SOUTH AFRICA
 TEL. 592-1001
 FAX. 591-2825

CONTAINER DIVISION

FOR FINANCIAL AND ACCOUNTING PURPOSES ONLY
 THIS DRAWING IS THE PROPERTY OF CONSANI ENGINEERING (PTY) LTD AND MUST BE KEPT IN CONFIDENCE
 CAD:

**SAFETY VALVE ASSEMBLY
 (WITHOUT BURST DISC)**

CLIENT	SCALE 1:1	DRAWING No.	REV
W.O.	DRAWN K.J.	CSTD 1060	0
	CHECKED <i>[Signature]</i>		
	DATE 22/03/94		

INSPECTION AUTHORITY

Lloyd's Register

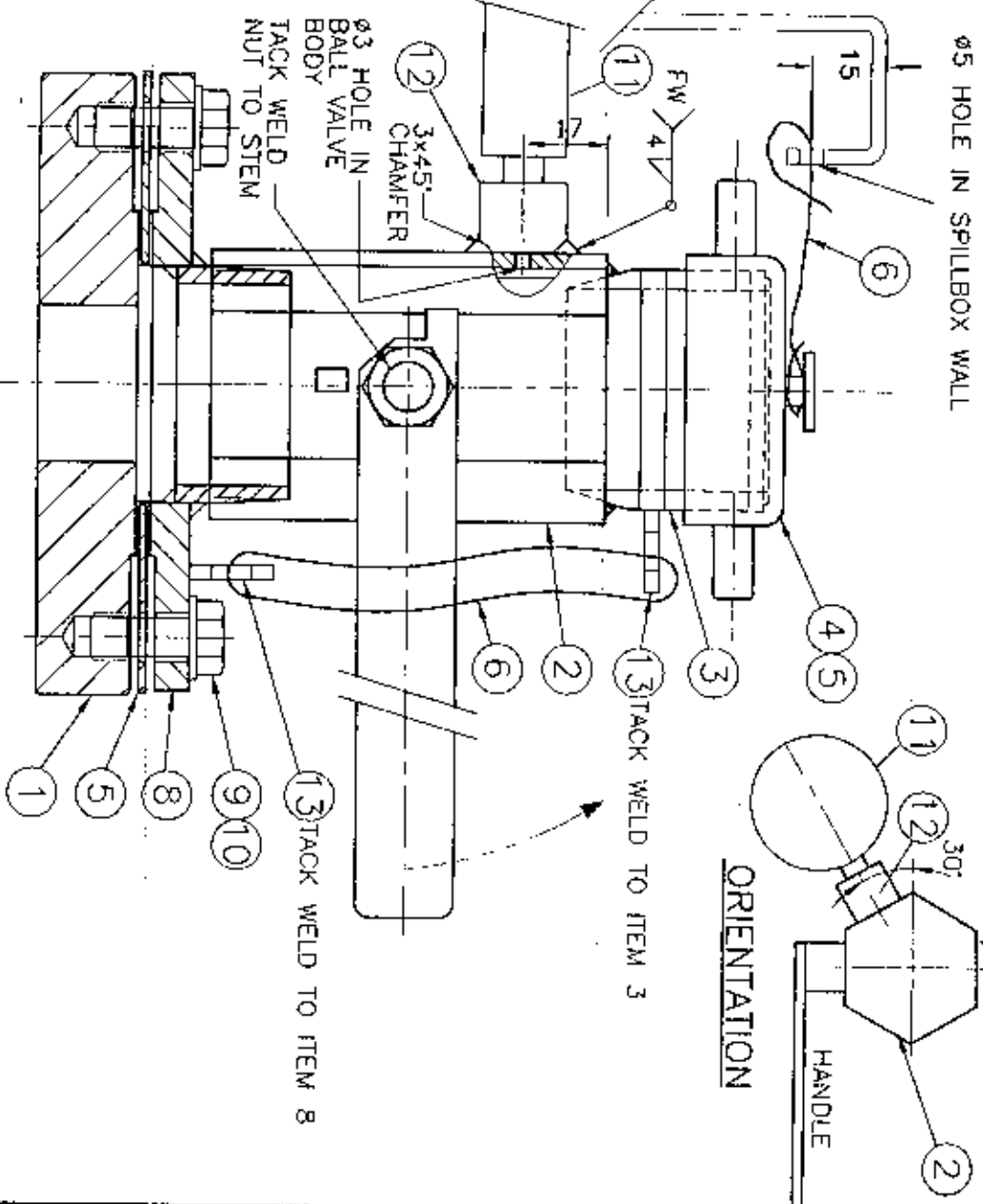
CAPE TOWN A.M. DONALDSON

REGISTERED COMPANY OF SOUTH AFRICA



DRAWING APPROVAL

AUTHORITY	SIGNATURE	DATE
DESIGN	<i>[Signature]</i>	22/03/94
QUALITY ASSURANCE	<i>[Signature]</i>	7/4
CONTRACTS	<i>[Signature]</i>	7/4



MATERIAL SPECIFICATION			
C	ASTM A240 316	Z	S/S 304
J	SOLID PIPE		
Y	S/S 316		

NOTE:
 QUANTITIES SHOWN ARE FOR 1-OFF T.C.
 20 OFF T.C. IN CONTRACT.

ITEM	QTY	DESCRIPTION	MAT	REF
13	2	M8 SPRING WASHER	Z	8133
12	1	1/4" NPT SOCKET	Y	8073
11	1	PRESSURE GAUGE		B.O.P.
10	4	M10 FLAT WASHER	Z	B.O.P.
9	4	SEISCREW M10x20 LG	Z	B.O.P.
8	1	1 1/2" FLANGED ADAPTOR		2641-97-1418
7	1	GASKET Ø46 x 1THK		CSTD1137
6	2	Ø2 CABLE LENGTH TO SUIT	Z	B.O.P.
5	1	GASKET		2641-97-1418
4	1	1 1/2" PRESSURE CAP		CSTD1137
3	1	1 1/2" BSP NIPPLE		CSTD 571
2	1	1 1/2" BSP BALL VALVE	Y	B.O.P.
1	1	AIR INLET WELD PAD		2641-97-1415

PARTS LIST

CONSANI ENGINEERING (PTY) LTD
 ELSIES RIVER, CAPS
 SOUTH AFRICA
 TEL: 590-3400
 FAX: 591-2875

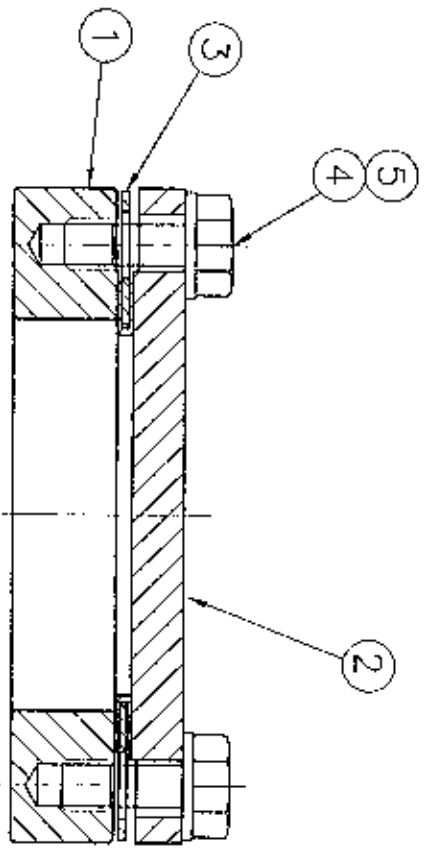
INTERMODAL CONTAINERS
 200 ROSSING AND SPURWAY RD
 THE AIRPORT OF ORANGE FRIEDRICHSDORP
 SOUTH AFRICA
 TEL: 591-2875
 FAX: 591-2875
 CNO: 26411420

1 1/2" AIR INLET ASSEMBLY

CLIENT:	W.O. 2641	SCALE:	1 : 1	DRAWING NO.:	2641-97-1420	REV.:	0
DATE:	05/03/97	DRAWN:	C.Purdon	CHECKED:			

REVISION A				DRAWING APPROVAL			
AUTHORITY	SIGN.	DATE	DESCRIPTION	AUTHORITY	SIGNATURE	DATE	
DRAWN				DESIGN			
DESIGN				QUALITY ASSURANCE			
CONTRACTS				CONTRACTS			
INSPECTION AUTHORITY				INSPECTION AUTHORITY			
INSPECTION AUTHORITY				CLIENT			

MATERIAL SPECIFICATION	
Z	SS304



SECTION

NOTE:
 QUANTITIES SHOWN ARE FOR 1-OFF T.C.
 20 OFF T.C. IN CONTRACT.

ITEM QTY	DESCRIPTION	MAT	REF
5	6 M10 FLAT WASHER	Z	BOP 8022
4	6 SETSCREW M10x20	Z	BOP 8111
3	1 GASKET		CSTD1195
2	1 BLIND FLANGE		2641-97-1115
1	1 WELD PAD		CSTD329

PARTS LIST

CONSANI ENGINEERING (PTY) LTD
 ELISES RIVER CAPE
 SOUTH AFRICA
 TEL: 590-3400
 FAX: 591-0925

INTERMODAL CONTAINERS
 CODE: 2641E207

THE SIGNING AND SIGNATURE IS THE PROPERTY OF CONSANI LTD. IT IS NOT TO BE REPRODUCED OR TRANSMITTED IN ANY FORM OR BY ANY MEANS, ELECTRONIC OR MECHANICAL, WITHOUT PERMISSION.

**BLANKING ARRANGEMENT
 FOR SAFETY RELIEF VALVE**

CLIENT: D.C.I.	SCALE: 1:1	DRAWING No.	REV.
W.O. 2641	DRAWN: G.Pardon	2641-97-1207	0
	CHECKED: _____		
	DATE: 05/02/97		

REVISION A				DRAWING APPROVAL			
AUTHORITY	SGN.	DATE	DESCRIPTION	AUTHORITY	SIGNATURE	DATE	
DRAWN				DESIGN			
DESIGN				QUALITY ASSURANCE			
QUALITY ASSURANCE				CONTRACTS			
CONTRACTS				INSPECTION AUTHORITY			
INSPECTION AUTHORITY				CLIENT			