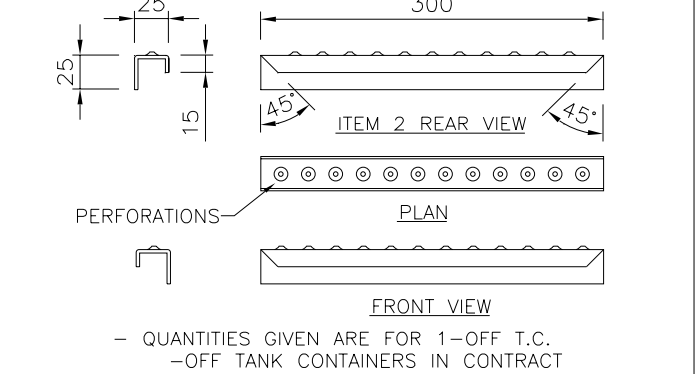


MATERIAL SPECIFICATION						
F6	300WA	H	COMM. QUALITY M.S.	Z	S/S	304
PARTS LIST						
No.	QTY	MAT	STOCK CODE	DESCRIPTION	DIMENSIONS	REFERENCE
1	2	H	11081	LADDER STRINGER	SHS 25x25x3x2284	325X2284G
2	7	H	11081	LADDER RUNG	PLATE 2x65x300	325X2289G
*	3	Z		BRACKET - TOP	PLATE 4.5x40x65	
*	4	Z		BRACKET - BOTTOM	PLATE 4.5x40x65	
5	4	F6	11081	BRACKET - STRINGER	FLATBAR 6x40x106	325X2289G
*	6	H		HANDLE	ROUND BAR ϕ 10x220	
*	7	Z		BOLT	M10x25	
*	8	Z		NUT	M10	
*	9	Z		FLAT WASHER	M10	

- ALL WELDING TO BE 3mm C.F.W. U.O.S.
 - NO PINHOLES IN WELDING
 - ALL SHARP EDGES TO BE ROUNDED
 - ITEMS 1, 2 & 5 TO BE HOT DIPPED GALVANISED TO 80 MICRONS (MIN) THICK.
 - HOT DIP GALVANISING TO BE DONE IN ACCORDANCE WITH SABS 763.
 - BURRS &/OR THREADS TO BE REMOVED AFTER GALVANISING. ENSURE LOOPHOLES ARE CLEAN.
 - TACK WELD NUTS ITEM 8 TO BOLTS ITEM 7 AFTER ASSEMBLY
- * - CONSANI TO MANUFACTURE/SUPPLY & FIT
 ▲ LADDER COMMODITY NUMBER - 11081



CONSANI ENGINEERING (PTY) LTD
 ELSIES RIVER, CAPE SOUTH AFRICA
 TEL. 590-3400 FAX. 591-2825

THIS DRAWING AND INFORMATION IS THE PROPERTY OF CONSANI ENG. (PTY) LTD AND MAY NOT BE REVEALED TO ANY THIRD PARTY WITHOUT OUR WRITTEN PERMISSION.
 CAD: CSTD2414c

REVISION C				REVISION B				DRAWING APPROVAL			NOMINAL DIMENSIONS (SHORT SIDE OF TRIANGLE)														
AUTHORITY	SIGN.	DATE	DESCRIPTION	AUTHORITY	SIGN.	DATE	DESCRIPTION	AUTHORITY	SIGNATURE	DATE	REQUIRED TOLERANCE	DEGREES & MINUTES			MM/M										
											0 TO 0	ABOVE 0 TO 315	ABOVE 315 TO 1000	0 TO 0	ABOVE 0 TO 315	ABOVE 315 TO 1000	0 TO 0	ABOVE 0 TO 120	ABOVE 120 TO 315	ABOVE 315 TO 1000	ABOVE 1000 TO 2000	ABOVE 2000 TO 4000	ABOVE 4000 TO 8000		
							ITEM 1 SHORTENED BY 5mm. LOWER TRANSFER BEAM RAISED 5mm.	DESIGN	S.E.	20/7/00	A	$\pm 20'$	$\pm 15'$	$\pm 10'$	$\pm 6'$	$\pm 4.5'$	$\pm 3'$	$\pm 1'$	$\pm 1'$	$\pm 2'$	$\pm 3'$	$\pm 4'$	$\pm 6'$	$\pm 8'$	$\pm 10'$
								QUALITY ASSURANCE			B	$\pm 45'$	$\pm 30'$	$\pm 20'$	$\pm 13'$	$\pm 9'$	$\pm 6'$	$\pm 2'$	$\pm 2'$	$\pm 3'$	$\pm 4'$	$\pm 6'$	$\pm 8'$	$\pm 10'$	
								CONTRACTS	A.L.	20/7/00	C	$\pm 1'$	$\pm 45'$	$\pm 30'$	$\pm 18'$	$\pm 13'$	$\pm 9'$	$\pm 3'$	$\pm 4'$	$\pm 6'$	$\pm 8'$	$\pm 11'$	$\pm 14'$	$\pm 18'$	
								INSPECTION AUTHORITY			D	$\pm 1'30'$	$\pm 1'15'$	$\pm 1'$	$\pm 26'$	$\pm 22'$	$\pm 18'$	$\pm 4'$	$\pm 7'$	$\pm 9'$	$\pm 12'$	$\pm 16'$	$\pm 21'$	$\pm 27'$	
CLIENT											DIN 8570 PART 1 FROM 0-30 TOLERANCE ± 1 DIN 8570 PART 3														

LADDER AND HANDLE ASSEMBLY AND DETAILS MODEL H03

CLIENT	SCALE	1:10	DRAWING NUMBER	REVISION
	DRAWN	SHIVAAN		
WORKS ORDER	CHECKED		CSTD 2414	C
	DATE	20/7/2000		