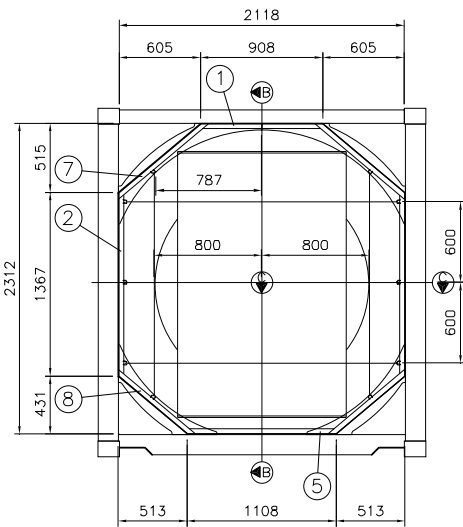
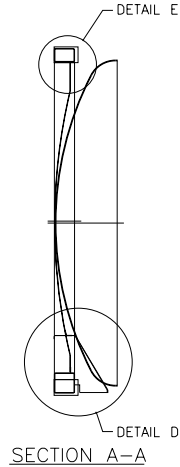


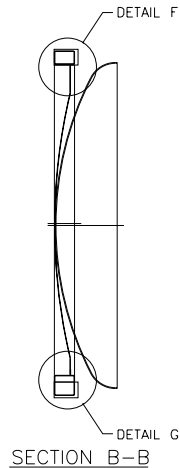
REAR END FRAME  
(VIEWED FROM OUTSIDE OF FRAME)



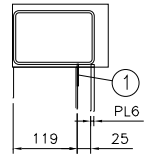
FRONT END FRAME  
(VIEWED FROM OUTSIDE OF FRAME)



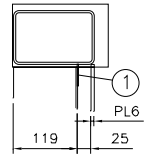
SECTION A-A



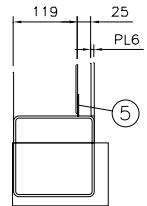
SECTION B-B



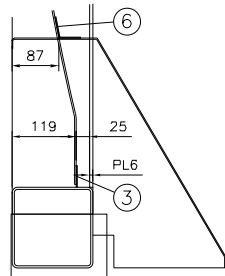
DETAIL E



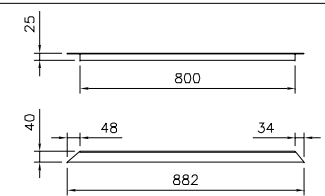
DETAIL F



DETAIL G

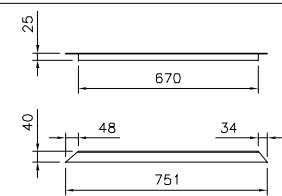


DETAIL D



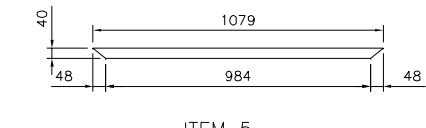
ITEM 7

2-OFF AS SHOWN & 2-OFF OPPOSITE HAND

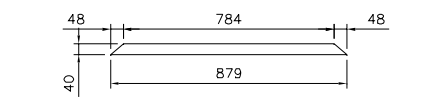


ITEM 8

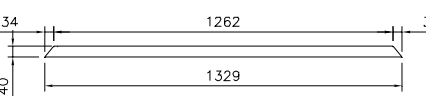
2-OFF AS SHOWN & 2-OFF OPPOSITE HAND



ITEM 5



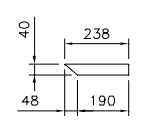
ITEM 1



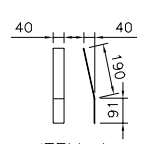
ITEM 2



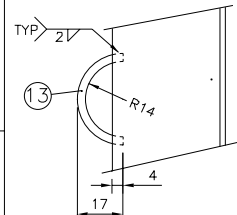
ITEM 6



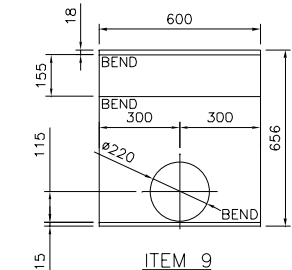
ITEM 3



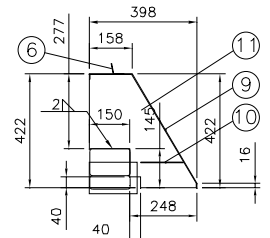
ITEM 4



ITEM 13 TYPICAL



ITEM 9



SECTION F-F

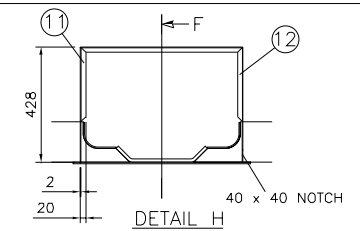
25 000L VALVE CABINET 1-OFF AS SHOWN WITHOUT 40 x 40 NOTCH

MATERIAL SPECIFICATION

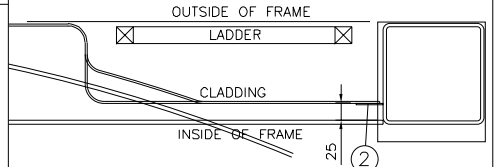
No.	QTY	MAT	BOP Pg/No	DESCRIPTION	DIMENSIONS	REFERENCE
1	2	Z	10104	INSULATION FLAT	FLAT 2 x 40 x 879	
2	4	Z	10104	INSULATION FLAT	FLAT 2 x 40 x 1329	
3	2	Z	10104	INSULATION FLAT	FLAT 2 x 40 x 238	
4	2	Z	10104	INSULATION FLAT	FLAT 2 x 40 x 281	
5	1	Z	10104	INSULATION FLAT	FLAT 2 x 40 x 1079	
6	1	Z		INSULATION ANGLE	PLATE 2 x 76 x 604	
7	4	Z		INSULATION ANGLE	PLATE 2 x 61 x 882	
8	4	Z		INSULATION ANGLE	PLATE 2 x 61 x 751	
9	1	Z		INSULATION FLAT	PLATE 2 x 656 x 600	
10	2	Z	10104	INSULATION FLAT	FLAT 2 x 40 x 160	
11	1	Z		INSULATION FLAT	PLATE 2 x 416 x 422	
12	1	Z		INSULATION FLAT	PLATE 2 x 416 x 422	
13	24	Z		STRAP LUG	Ø3 x 62 LONG	[PIC STRAP HOLDER]
14	2			GRP CLADDING		

QUANTITIES GIVEN ARE FOR 1-OFF T.C.  
50-OFF T.C. IN CONTRACT

- NOTE:
- ALL WELDING TO BE 2mm STITCH WELDS U.O.N. WHERE POSSIBLE WELDING & TACKS TO BE DONE ON FAR SIDE OF CLADDING.
  - 2mm C.F.W ON FRONT & REAR END INSULATION FLAT DIAGONALS.



DETAIL H



SECTION C-C (TYPICAL)

**CONSANI ENGINEERING (PTY) LTD**  
 ELSIES RIVER, CAPE SOUTH AFRICA  
 TEL. 590-3400 FAX. 591-2825

**INTERMODAL CONTAINERS**

THIS DRAWING AND INFORMATION IS THE PROPERTY OF CONSANI ENG. (PTY) LTD AND MAY NOT BE REVEALED TO ANY THIRD PARTY WITHOUT OUR WRITTEN PERMISSION.  
CAD: 24422367

REVISION E				REVISION D				REVISION C				REVISION B				REVISION A			
AUTHORITY	SIGN.	DATE	DESCRIPTION	AUTHORITY	SIGN.	DATE	DESCRIPTION	AUTHORITY	SIGN.	DATE	DESCRIPTION	AUTHORITY	SIGN.	DATE	DESCRIPTION	AUTHORITY	SIGN.	DATE	DESCRIPTION
DRAWN				DRAWN				DRAWN				DRAWN				DRAWN			
DESIGN				DESIGN				DESIGN				DESIGN				DESIGN			
QUALITY ASSURANCE				QUALITY ASSURANCE				QUALITY ASSURANCE				QUALITY ASSURANCE				QUALITY ASSURANCE			
CONTRACTS				CONTRACTS				CONTRACTS				CONTRACTS				CONTRACTS			
INSPECTION AUTHORITY				INSPECTION AUTHORITY				INSPECTION AUTHORITY				INSPECTION AUTHORITY				INSPECTION AUTHORITY			

DRAWING APPROVAL		NOMINAL DIMENSIONS (SHORT SIDE OF TRIANGLE)		NOMINAL DIMENSIONS												
AUTHORITY	SIGNATURE	DATE	DEGREES & MINUTES	ABOVE 0	ABOVE 10	ABOVE 15	ABOVE 20	ABOVE 25	ABOVE 30	ABOVE 40	ABOVE 50	ABOVE 60	ABOVE 80	ABOVE 100		
REQUIRED TOLERANCE				±0.15	±0.20	±0.25	±0.30	±0.35	±0.40	±0.45	±0.50	±0.60	±0.70	±0.80		
A				± 20'	± 15'	± 10'	± 6'	± 4.5'	± 3'	± 1'	± 2'	± 3'	± 4'	± 4'	± 6'	
B				± 45'	± 30'	± 20'	± 13'	± 9'	± 6'	± 2'	± 2'	± 3'	± 4'	± 6'	± 8'	± 10'
C				± 1'	± 45'	± 30'	± 18'	± 13'	± 9'	± 3'	± 4'	± 6'	± 8'	± 11'	± 14'	± 18'
D				± 1'30"	± 1'15"	± 1'	± 26'	± 22'	± 18'	± 4'	± 7'	± 9'	± 12'	± 16'	± 21'	± 27'
CLIENT				DIN 8570 PART 1			FROM 0-30 TOLERANCE ±1			DIN 8570 PART 3						

SCALE	1:20	DRAWING NUMBER	REVISION
DRAWN	RASHAAD	2442-01-2367	0
CHECKED			
DATE	13/02/02		

G.R.P. END CLADDING  
SUPPORT DETAILS  
25 000 LITRE MODEL H03

WORKS ORDER	2442	SCALE	1:20	DRAWING NUMBER	2442-01-2367	REVISION	0
-------------	------	-------	------	----------------	--------------	----------	---