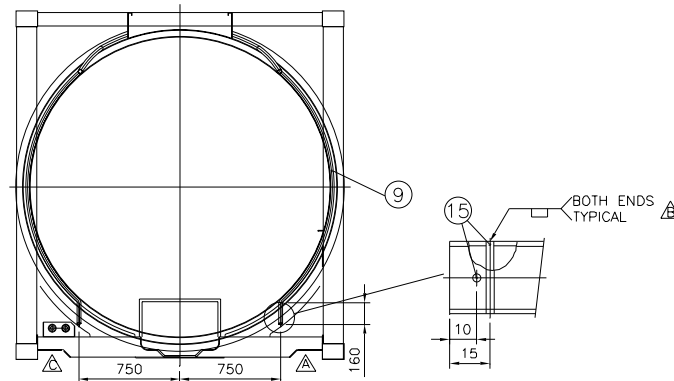
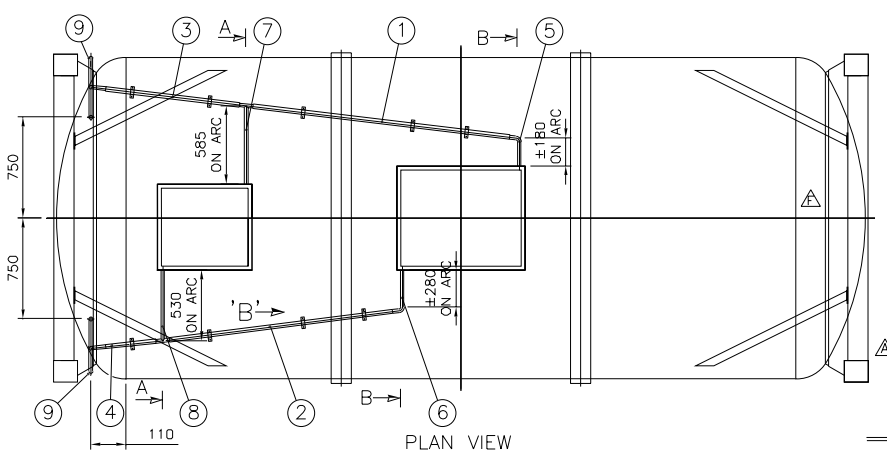


SIDE VIEW

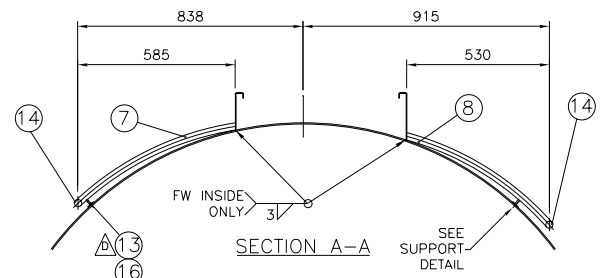


REAR END VIEW

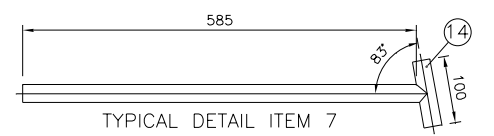
TIR SEALING DETAIL



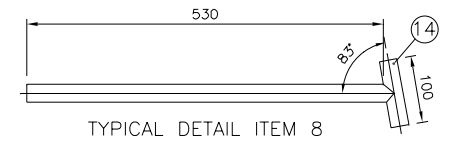
PLAN VIEW



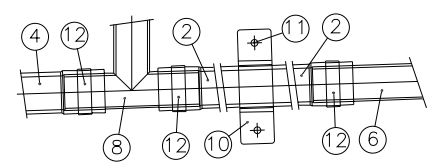
SECTION A-A



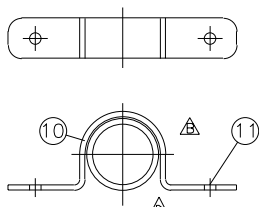
TYPICAL DETAIL ITEM 7



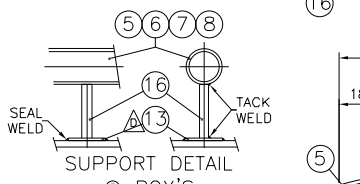
TYPICAL DETAIL ITEM 8



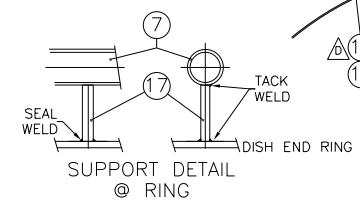
DETAIL C



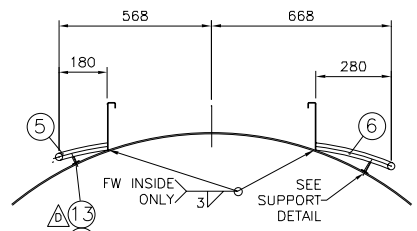
DETAIL C TYPICAL 8 PLACES



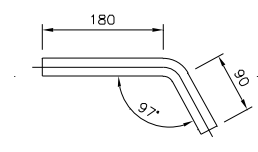
SUPPORT DETAIL @ BOX'S



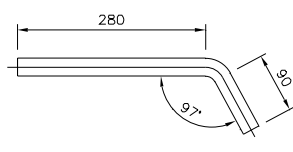
SUPPORT DETAIL @ RING



SECTION B-B



TYPICAL DETAIL ITEM 5



TYPICAL DETAIL ITEM 6

MATERIAL SPECIFICATION						
O P.V.C.	Z S/S 304	N DN 17441 W1.4401<=0.03%				
R1 LV STABILISED NYLON	E ASTM A240 304					
PARTS LIST						
No.	QTY	MAT	STOCK CODE	DESCRIPTION	DIMENSIONS	REFERENCE
1	1	0	B002	REINFORCED TRANSPARENT DRAIN TUBE	1" x 1950LG	
2	1	0	B002	REINFORCED TRANSPARENT DRAIN TUBE	1" x 1700LG	
3	1	0	B002	REINFORCED TRANSPARENT DRAIN TUBE	1" x 1000LG	
4	1	0	B002	REINFORCED TRANSPARENT DRAIN TUBE	1" x 400LG	
5	1	Z	B163	DRAIN TUBE	3/4" NB SCH10 x 300LG	
6	1	Z	B163	DRAIN TUBE	3/4" NB SCH10 x 400LG	
7	1	Z	B163	DRAIN TUBE	3/4" NB SCH10 x 585LG	
8	1	Z	B163	DRAIN TUBE	3/4" NB SCH10 x 530LG	
9	1	Z	B163	DRAIN TUBE	3/4" NB SCH10 x ±2100LG	
10	8	0		SADDLE CLAMPS		
11	24	Z		RIVET		
12	12	Z		HOSE CLAMP		
13	4	E		SUPPORT DOUBLER	PLATE 2xØ28	
14	4	Z	B163	DRAIN TUBE	3/4" NB SCH10 x 100LG	
15	4	Z	B163	WIRE SEAL	RND BAR Ø3 x 35	
16	4	Z	Ex.D.E	SUPPORT	PLATE **xØx30	
17	6	Z	Ex.D.E	SUPPORT	PLATE **xØx40	

NOTES

- ALL PIPING TO CLEAR DECALS.
- QUANTITIES GIVEN ARE FOR 1-OFF T.C.
- OFF TANK CONTAINERS IN CONTRACT

** = THICKNESS OF SUPPORT EQUAL TO BEFORE FORMING THICKNESS OF DISHED END PLATE.

REVISION F			REVISION E			REVISION D			REVISION C			REVISION B			DRAWING APPROVAL			NOMINAL DIMENSIONS (SHORT SIDE OF TRIANGLE)			NOMINAL DIMENSIONS																
AUTHORITY	SIGN.	DATE	DESCRIPTION	AUTHORITY	SIGN.	DATE	DESCRIPTION	AUTHORITY	SIGN.	DATE	DESCRIPTION	AUTHORITY	SIGN.	DATE	DESCRIPTION	AUTHORITY	SIGNATURE	DATE	REQUIRE	TOLERANCE	DEGREES & MINUTES	MM/M	ABOVE	ABOVE	ABOVE	ABOVE	ABOVE	ABOVE	ABOVE	ABOVE							
DRAWN	S.G.	18/9/01	CONE TO CONE CONNECTION PICTORIALLY REVISED.	DRAWN	G.P.	12/5/01	REAR END VIEW PICTORIALLY REVISED.	DRAWN	G.P.	7/5/01	ITEM 13 WAS INCORRECTLY DIMENSIONED AS 12. NOW PICTORIALLY REVISED.	DRAWN	T.J.B.	19/3/01	BOTTOM FRAME BEAMS & SILL RAISED PICTORIALLY	DRAWN	S.G.	17/8/00	ITEM 10 MATERIAL TYPE CORRECTED FROM 'Z'.	DESIGN	E.M.	16/5/00	A	± 20'	± 15'	± 10'	± 6	± 4.5	± 3	± 1	± 1	± 2	± 3	± 4	± 6	± 8	± 10
DESIGN				DESIGN	S.E.	12/5/01		DESIGN	S.E.	7/5/01		DESIGN	S.E.	3/5/01		QUALITY ASSURANCE							B	± 45'	± 30'	± 20'	± 13	± 9	± 6	± 2	± 2	± 3	± 4	± 6	± 8	± 10	
QUALITY ASSURANCE				QUALITY ASSURANCE				QUALITY ASSURANCE				QUALITY ASSURANCE				CONTRACTS	A.L.	16/5/00					C	± 1'	± 45'	± 30'	± 18	± 13	± 9	± 3	± 4	± 6	± 8	± 11	± 14	± 18	
CONTRACTS				CONTRACTS	A.L.	12/5/01		CONTRACTS	A.L.	7/5/01		CONTRACTS	A.L.	4/5/01		INSPECTION AUTHORITY							D	± 1'	± 30'	± 15'	± 1'	± 26	± 22	± 18	± 4	± 7	± 9	± 12	± 16	± 21	± 27
INSPECTION AUTHORITY				INSPECTION AUTHORITY				INSPECTION AUTHORITY				INSPECTION AUTHORITY				CLIENT							DIN 8570 PART 1			FROM 0-30 TOLERANCE ±1			DIN 8570 PART 3								

CONSANI ENGINEERING (PTY) LTD
 ELSIES RIVER, CAPE SOUTH AFRICA
 TEL. 590-3400
 FAX. 591-2825

INTERMODAL CONTAINERS

THIS DRAWING AND INFORMATION IS THE PROPERTY OF CONSANI ENG. (PTY) LTD AND MAY NOT BE REVEALED TO ANY THIRD PARTY WITHOUT OUR WRITTEN PERMISSION.
 CAD: H03U23171

DRAWN				SCALE				DRAWING NUMBER				REVISION	
CLIENT	SCALE	1:20	DRAWING NUMBER	H03U-2317	REVISION	F	CLIENT	DRAWN	SHWANA	CHECKED	DATE	16/5/00	
ORDER	DATE	16/5/00	DRAWING NUMBER	H03U-2317	REVISION	F	CLIENT	DRAWN	SHWANA	CHECKED	DATE	16/5/00	