

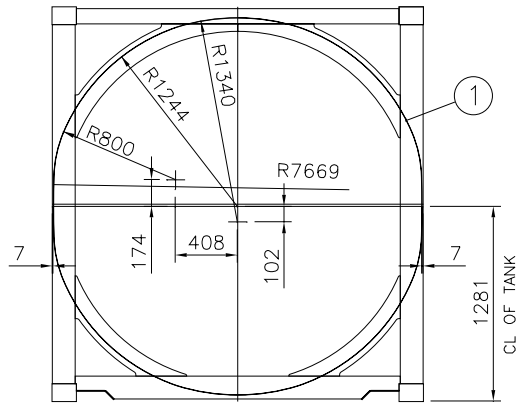
MATERIAL SPECIFICATION

Z	S/S 304					
PARTS LIST						
No.	QTY	MAT	STOCK CODE	DESCRIPTION	DIMENSIONS	REFERENCE
1	1	Z	-	INSULATION SUPPORT FLAT	PLATE 2x40x7782	(FRONT END)
2	1	Z	-	INSULATION SUPPORT FLAT	PLATE 2x40x7173	(REAR END)
3	2	Z	-	INSULATION SUPPORT FLAT	PLATE 2x50x892	(MANWAY)
4	2	Z	-	INSULATION SUPPORT FLAT	PLATE 2x50x955	(MANWAY)
5	2	Z	-	INSULATION SUPPORT FLAT	PLATE 2x50x752	(TOP DISCHARGE)
6	2	Z	-	INSULATION SUPPORT FLAT	PLATE 2x50x705	(TOP DISCHARGE)

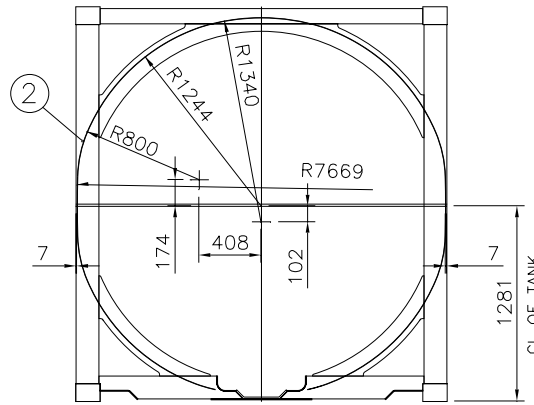
NOTE:

ALL WELDING TO BE 2mm STITCH WELDS U.O.N.  
WHERE POSSIBLE WELDING & TACKS TO BE  
DONE ON FAR SIDE OF CLADDING.

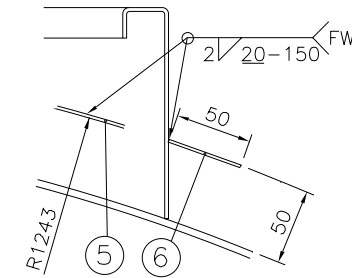
- QUANTITIES GIVEN ARE FOR 1-OFF T.C.  
--OFF TANK CONTAINERS IN CONTRACT



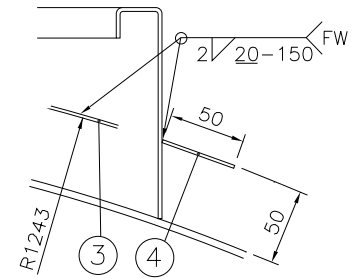
FRONT END FRAME  
(VIEWED FROM INSIDE OF FRAME)



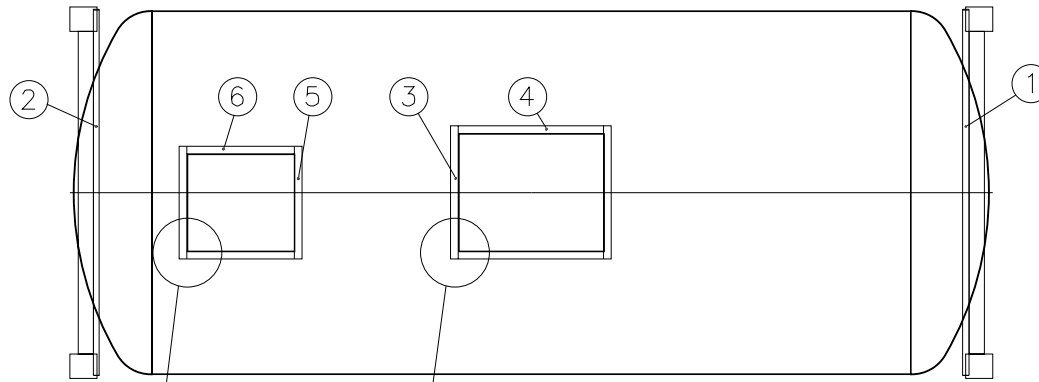
REAR END FRAME  
(VIEWED FROM INSIDE OF FRAME)



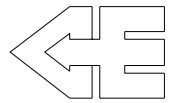
DETAIL 'A' TOP DISCHARGE BOX



DETAIL 'B' MANWAY BOX



SEE DETAIL 'A' SEE DETAIL 'B' PLAN VIEW

	<b>CONSANI ENGINEERING (PTY) LTD</b> ELSIES RIVER, CAPE SOUTH AFRICA TEL. 590-3400 FAX. 591-2825	
	INTERMODAL CONTAINERS	THIS DRAWING AND INFORMATION IS THE PROPERTY OF CONSANI ENG. (PTY) LTD AND MAY NOT BE REVEALED TO ANY THIRD PARTY WITHOUT OUR WRITTEN PERMISSION. CAD: HO3U2314c

REVISION C				REVISION B				DRAWING APPROVAL			NOMINAL DIMENSIONS (SHORT SIDE OF TRIANGLE)													
AUTHORITY	SIGN.	DATE	DESCRIPTION	AUTHORITY	SIGN.	DATE	DESCRIPTION	AUTHORITY	SIGNATURE	DATE	REQUIRED TOLERANCE	DEGREES & MINUTES			MM/M									
												ABOVE 0 TO 315	ABOVE 315 TO 1000	ABOVE 1000	ABOVE 0 TO 315	ABOVE 315 TO 1000	ABOVE 1000	ABOVE 0 TO 120	ABOVE 120 TO 315	ABOVE 315 TO 1000	ABOVE 1000 TO 2000	ABOVE 2000 TO 4000	ABOVE 4000 TO 8000	
DESIGN	G.P.	15/1/02	REAR END VIEW PICTORIALLY REVISED.	DESIGN	G.P.	23/5/01	REAR END VIEW PICTORIALLY REVISED.	DESIGN	S.E.	8/5/00	A	± 20'	± 15'	± 10'	± 6'	± 4.5'	± 3'	± 1'	± 1'	± 2'	± 3'	± 4'	± 4'	± 6'
QUALITY ASSURANCE	E.M.	15/1/02		QUALITY ASSURANCE	E.M.	23/5/01		CONTRACTS	A.L.	8/5/00	B	± 45'	± 30'	± 20'	± 13'	± 9'	± 6'	± 2'	± 2'	± 3'	± 4'	± 6'	± 8'	± 10'
CONTRACTS	A.L.	15/1/02		CONTRACTS	A.L.	23/5/01		INSPECTION AUTHORITY			C	± 1'	± 45'	± 30'	± 18'	± 13'	± 9'	± 3'	± 4'	± 6'	± 8'	± 11'	± 14'	± 18'
INSPECTION AUTHORITY				INSPECTION AUTHORITY				CLIENT			D	±1'30'	±1'15'	± 1'	± 26'	± 22'	± 18'	± 4'	± 7'	± 9'	± 12'	± 16'	± 21'	± 27'

CLADDING RING SUPPORT DETAIL 25 000 LITRE MODEL HO3			
CLIENT		SCALE	1:25
WORKS ORDER		DRAWN	SHIVAAN
		CHECKED	
		DATE	25/4/00
		DRAWING NUMBER	HO3U 2314
		REVISION	C

DIN 8570 PART 1 FROM 0-30 TOLERANCE ±1 DIN 8570 PART 3