

# MATERIAL SPECIFICATION

Y S/S 316

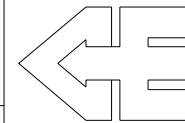
Z S/S 304

## PARTS LIST

| No. | QTY | MAT | STOCK CODE | DESCRIPTION                   | REFERENCE    |
|-----|-----|-----|------------|-------------------------------|--------------|
| 1   | 1   | Y   | 12049      | 3" BUTTERFLY VALVE            | FV 368/7000B |
| 2   | 1   | Y   | 8128       | 3" FOOT VALVE                 | FV 830/3200  |
| 3   | 1   |     | -          | GASKET-FOOT VALVE INLET       | CSTD 1193    |
| 4   | 1   |     | -          | GASKET-BUTTERFLY VALVE INLET  | CSTD 1191    |
| 5   | 1   |     | -          | GASKET-BUTTERFLY VALVE OUTLET | CSTD 1192    |
| 6   | 1   |     | -          | WELD PAD                      | CSTD 12      |
| 7   | 1   |     | -          | ADAPTOR FLANGE                | CSTD 465     |
| 8   | 4   |     | -          | 3" BUTTERFLY VALVE STUD       | CSTD 43      |
| 9   | 1   | Z   | 10203      | 3" BSP CAP                    | B.O.P.       |
| 10  | 1   | Z   | -          | RETAINING CHAIN               | B.O.P.       |
| 11  | 4   | Z   | -          | M16 STUD x 65lg               | B.O.P.       |
| 12  | 12  | Z   | -          | M16 NUT                       | B.O.P.       |
| 13  | 12  | Z   | -          | M16 SPRING WASHER             | B.O.P.       |

### NOTE:

- QUANTITIES GIVEN ARE FOR 1-OFF T.C.  
50-OFF TANK CONTAINERS IN CONTRACT



## CONSANI ENGINEERING (PTY) LTD

ELSIES RIVER, CAPE  
SOUTH AFRICA

TEL. 590-3400  
FAX. 591-2825

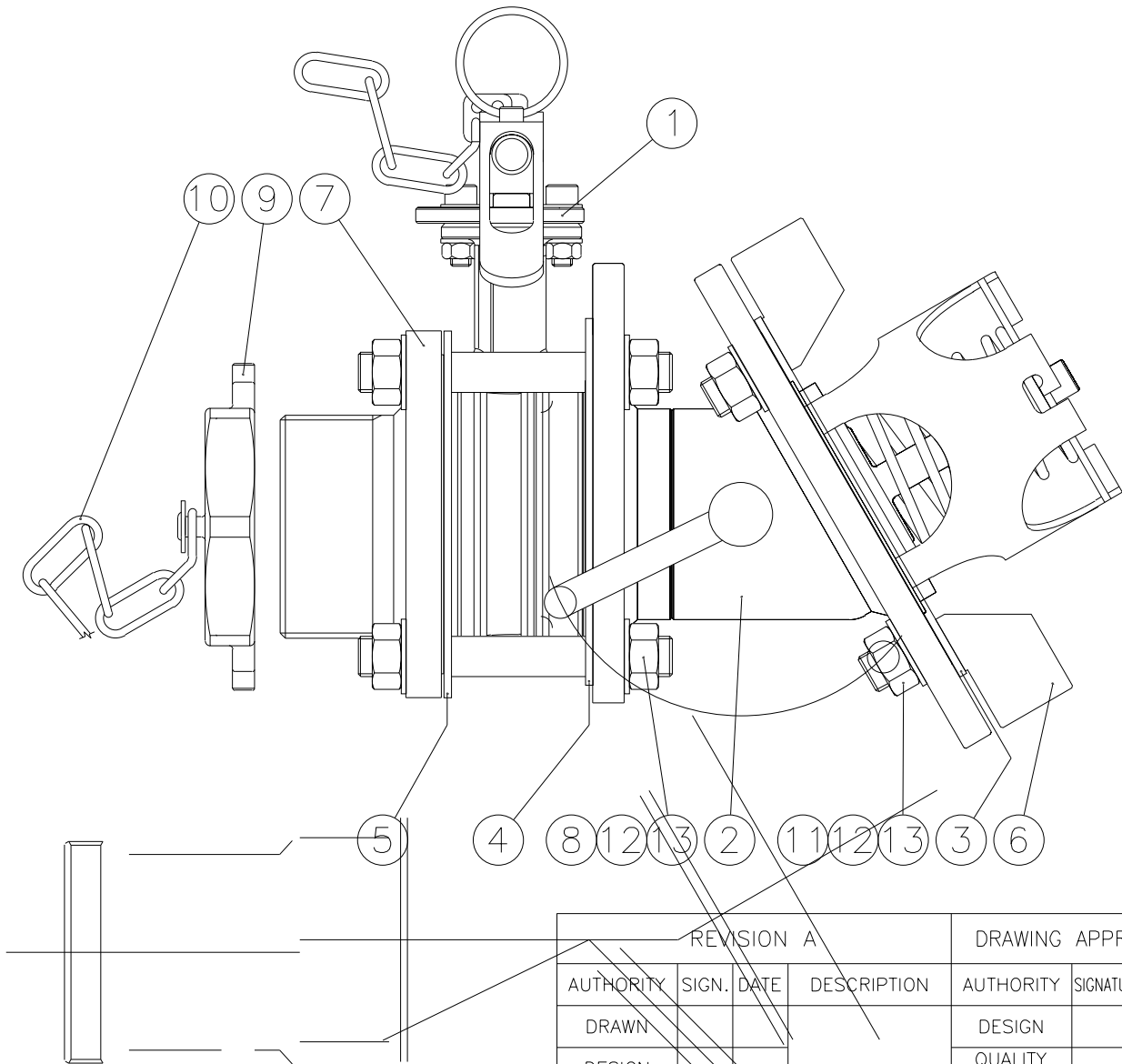
### INTERMODAL CONTAINERS

THIS DRAWING AND INFORMATION IS  
THE PROPERTY OF CONSANI ENG.  
(PTY) LTD AND MAY NOT BE REVEALED  
TO ANY THIRD PARTY WITHOUT OUR  
WRITTEN PERMISSION.

CAD: 24420051

## 3" (80 NB) x 30° BOTTOM DISCHARGE ARRANGEMENT

| CLIENT      | SCALE | 1:2     | DRAWING NUMBER | REVISION |
|-------------|-------|---------|----------------|----------|
| WORKS ORDER | 2442  | CHECKED | 2442-02-0051   | 0        |
|             |       | DATE    | 12/02/02       |          |



| REVISION A           |       |      |             | DRAWING APPROVAL     |           |      |
|----------------------|-------|------|-------------|----------------------|-----------|------|
| AUTHORITY            | SIGN. | DATE | DESCRIPTION | AUTHORITY            | SIGNATURE | DATE |
| DRAWN                |       |      |             | DESIGN               |           |      |
| DESIGN               |       |      |             | QUALITY ASSURANCE    |           |      |
| QUALITY ASSURANCE    |       |      |             | CONTRACTS            |           |      |
| CONTRACTS            |       |      |             | INSPECTION AUTHORITY |           |      |
| INSPECTION AUTHORITY |       |      |             | CLIENT               |           |      |